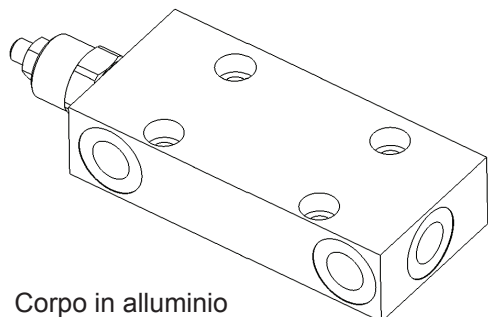
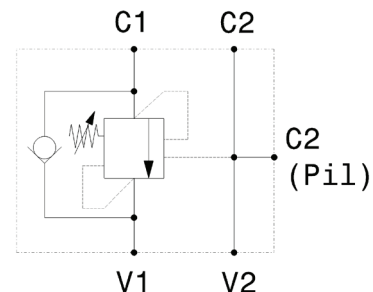
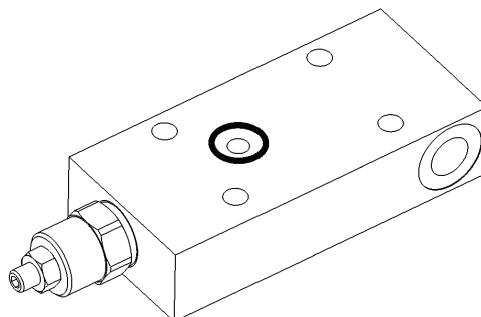


Valvola OVERCENTER in linea semplice effetto con pilotaggio esterno flangiabile  
*Flange mounted, single effect COUNTERBALANCE in line valve with external pilot*

mod. OVC-SE-L-F40-38



Corpo in alluminio  
 Aluminium body



|   |                     |
|---|---------------------|
| Pressione massima<br><i>Max pressure</i>                              | 350 bar<br>5000 psi |
| Rapporto di pilotaggio standard<br><i>Standard pilot ratio</i>        | 4,25:1              |
| Rapporto di pilotaggio a richiesta<br><i>Pilot ratio upon request</i> | 3:1 8:1 10:1        |

|   |              |
|---|--------------|
| Dati e tarature ottenuti usando olio con viscosità 30 cSt a 50°C<br><i>Performances and calibrations are carried out by using hydraulic oil with 30 cSt viscosity at 50°C</i> |              |
| Viscosità consigliate<br><i>Recommended viscosity</i>   | 10 ÷ 420 cSt |
| Temperature di lavoro<br><i>Working temperature</i>   | -20 ÷ +90 °C |
| Filtrazione assoluta<br><i>Absolute filtration</i>  | 25 µ         |

| Modello<br><i>Type</i> | V1,V2,C2 | C2(Pil) | Portata max<br><i>Max. flow</i> |
|------------------------|----------|---------|---------------------------------|
| OVC-SE-L-F40-38        | 3/8"GAS  | 3/8"GAS | 40 l/min 10.5 gpm               |

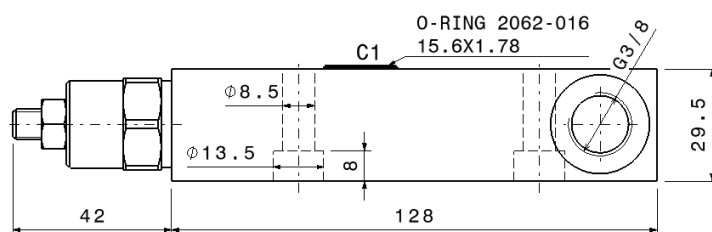
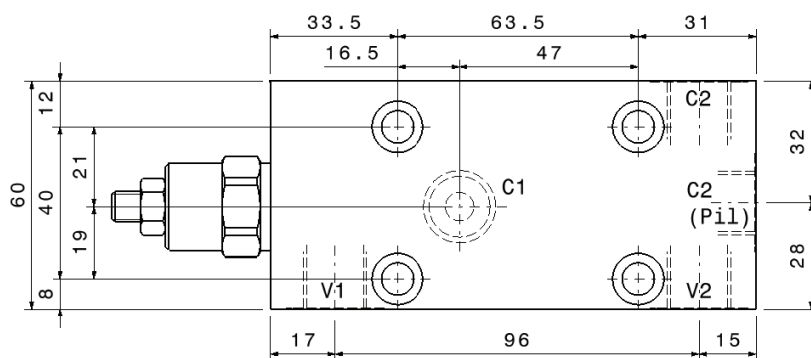
| Taratura<br><i>Setting</i>  |  |   |                                     |
|---|--|---|-------------------------------------|
| La valvola deve essere tarata almeno 1.3 volte la massima pressione indotta dal carico<br><i>The valve must be set at least 1.3 times maximum load induced pressure</i> |  |   |                                     |
| Codice<br><i>Code</i>   | Taratura standard<br><i>Standard setting (Q=5 l/min)</i> | Campo di taratura<br><i>Adj. Pressure range</i> | Colore molla<br><i>Spring color</i> |
| 01  | 100 bar<br>1450 psi                                      | 20÷200 bar<br>290÷2900 psi                      | Bianco<br>White                     |
| 02  | 280 bar<br>4000 psi                                      | 50÷350 bar<br>725÷5000 psi                      | Nero<br>Black                       |

Regolazioni - *Adjustments*

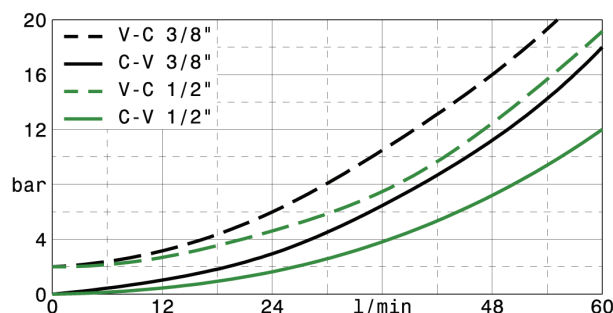
|   |  |   |
|---|--|---|
| <br>Vite esterna esagono incassato<br><i>Leakproof hex socket screw</i> | <b>C</b><br><br>Piombatura<br><i>Sealing cap</i> | <b>D</b><br><br>Cappellotto<br><i>Cap</i> |
|---|--|---|

Sigla di ordinazione / *Ordering code*

|                        |  |   |
|------------------------|--|---|
| OVC-SE-L-F40-38        | 02   | -   |
| Modello<br><i>Type</i> | Codice taratura<br><i>Setting code</i><br>01, 02 | Codice regolazione<br><i>Adjustment code</i><br>-, C, D |



Vedi solo curva 3/8"  
 See only 3/8" curve



I dati non sono impegnativi, CBF si riserva di apportare modifiche senza preavviso.  
 The specifications are not binding, CBF reserves the right to introduce modifications without notice.