

# Valvole di blocco e di non ritorno

## *Check valves*

### INDICE

### *INDEX*

	Pagina
	<i>Page</i>
Informazioni generali <i>General informations</i>	2
Indice per tipo di valvola <i>Index by valve type</i>	3
Indice alfabetico <i>Alphabetical index</i>	6

## INFORMAZIONI GENERALI GENERAL INFORMATION

### Ordinazioni

Gli ordini devono essere inviati alla:

#### **CBF S.r.l.**

Via Caboto, 1  
36075 Montecchio Maggiore (VI)  
Tel. 0444 499141-3  
Fax 0444 499145

Per posta o telefax. Si prega di evitare, ove possibile, di effettuare ordini per telefono dato che questi dovranno essere in ogni caso confermati per lettera o fax.

### **Gli ordini devono chiaramente indicare:**

- Esatta ragione sociale o indirizzo completo del richiedente.
- Numero d'ordine.
- Data d'ordine.
- Numero d'offerta **CBF** (qualora esista).
- Denominazione valvola.
- Data consegna richiesta.
- Destinazione merce.
- Vettore.

### **Garanzia**

• La **CBF S.r.l.** garantisce che i suoi prodotti sono esenti da difetti di materiali o di costruzione per un periodo di 12 mesi a partire dalla data di spedizione dai propri magazzini in Montecchio Maggiore (VI) - Italia.

• La garanzia è esclusivamente limitata alla riparazione o sostituzione, a giudizio della **CBF S.r.l.**, d'ogni parte o parti difettose in materiale o costruzione, previo esame dei pezzi che devono essere ritornati alla **CBF**, franco destino, corredati di descrizione dettagliata del malfunzionamento.

• **CBF** declina ogni responsabilità ed esclude l'applicazione della garanzia per quei prodotti che, a proprio insindacabile giudizio, siano stati contaminati, impiegati erroneamente o manomessi in circostanze al di fuori del proprio controllo o senza autorizzazione. La garanzia decade qualora siano apportate modifiche a circuiti o impianti tali da influenzare negativamente il funzionamento del prodotto **CBF**.

• In nessun caso una rivalsa in garanzia potrà comportare revoche contrattuali, sospensioni anche parziali di pagamenti, compensi per danni o rimborsi spese, ivi compresa la spesa di manodopera per la sostituzione del pezzo.

• Questa garanzia riconosciuta dalla **CBF S.r.l.** attraverso la propria organizzazione assistenziale esclude e sostituisce ogni altra garanzia di qualsiasi genere.

• **CBF S.r.l.** non è responsabile per danni diretti o indiretti, ivi comprese eventuali perdite economiche conseguenti a fermo macchina, o ritardate consegne di qualsiasi genere.

### **Responsabilità d'uso.**

Tutti i prodotti **CBF** sono sottoposti a rigorosi collaudi funzionali, conformemente alle caratteristiche riportate sulla documentazione tecnica **CBF**.

Dal momento che le reali condizioni di funzionamento delle apparecchiature del Compratore non sono riproducibili integralmente nei laboratori della **CBF**, la responsabilità della scelta e l'idoneità dei prodotti sono a carico del Compratore stesso.

### **Giurisdizione**

In caso di contestazione in cui la **CBF S.r.l.** sia convenuta è esclusivamente competente il Foro di Vicenza. Le tratte, le accettazioni di regolamenti, le spedizioni senza o contrassegno, le esazioni per mezzo d'incaricati, non costituiscono deroga a questa clausola anche nel caso in cui la **CBF S.r.l.** fosse ricercata per connessione o continenza di causa.

Quando la **CBF S.r.l.** sia attrice potrà ricorrere sia al Foro di Vicenza, sia a quello di residenza del convenuto.

### **Order entry procedure**

Orders are received by:

#### **CBF S.r.l.**

Via Caboto, 1  
36075 Montecchio Maggiore (VI)  
Tel. ++39-0444-499141/3  
Fax ++39-0444-499145

By mail or telefax. When possible, please avoid sending orders by telephone since you must later confirm them by letter.

### **Orders must clearly show:**

- The corporate name and the full address of the applicant.
- Order number.
- Order date.
- **CBF's** offer number (when existing).
- Valve denomination.
- Required delivery date.
- Goods destination.
- Carrier.

### **Warranty**

• **CBF S.r.l.** warrants that its products are free from defects in material and workmanship for a period of 12 months from the date of shipment from the factory in Montecchio Maggiore (VI) - Italy.

• The warranty is strictly limited to the repair or replacement (at **CBF S.r.l.** option) of any part or parts defective in material or workmanship, subject to **CBF's** examination of the part which must be returned to **CBF S.r.l.**, carriage pre-paid by the Customer, with a detailed description of the malfunction.

• **CBF S.r.l.** shall not be responsible for circumstances beyond its control and this warranty shall not apply to products which, in the sole judgement of **CBF** have been subjected to contamination, tampering, negligent handling, misapplication or other misuse.

Changes in circuit or changes in other components which may adversely affect the products of **CBF S.r.l.** void this warranty.

• In none of the cases quoted in the above paragraphs can the customer claim the cancellation of the contract compensation for damages or reimbursement of any expenses as, for example, labor required to replace the defective parts.

• This warranty recognized by **CBF S.r.l.** through its service organization is expressly in lieu of and excludes and supersedes any warranty of merchantability or fitness.

• **CBF S.r.l.** makes no other warranties, expressed or implied, and is not responsible for any consequential damages resulting from use by any buyer or user, its liability being limited to the value of product sold or to the obligation to replace a defective part. In no event shall **CBF S.r.l.** be liable for loss of anticipated profits, consequential damages, or loss of any equipment, installation, system operation or service into which the products of **CBF S.r.l.** may be fitted. **CBF S.r.l.** shall not be liable for any default, claimed breach of warranty, failure to deliver or otherwise, except as herein specifically indicated.

### **Responsibility for use.**

All **CBF** products are checked and tested, in accordance with the specifications indicated in the relevant technical documents.

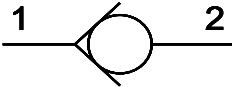
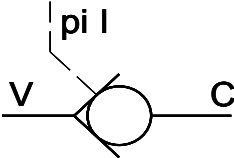
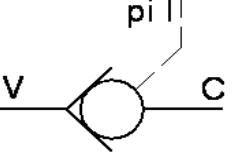
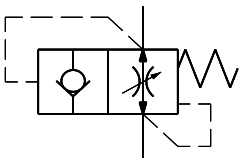
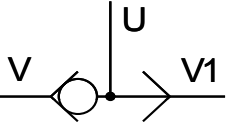
Since the actual installation and performance of the Customer's equipment cannot be exactly reproduced in the **CBF** testing laboratories, the assurance of suitability of all **CBF's** products in the Customer application is the responsibility of the Customer himself.

### **Jurisdiction**

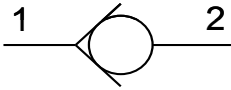
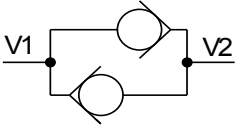
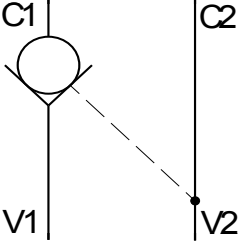
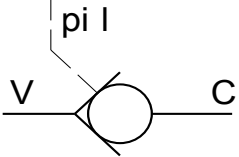
In case of a dispute where **CBF S.r.l.** is summoned before court, the Court in Law in Vicenza (Italy) is exclusively competent: drafts, acceptance of settlements, dispatches without or with C.O.D. do not constitute a derogation from this clause of jurisdiction even in case **CBF S.r.l.** should be pursued for concession or contenance of cause.

When **CBF S.r.l.** is the plaintiff, it will be able to recur both to Court of Law in Vicenza and to that where the other party resides.

## INDICE PER TIPO DI VALVOLA INDEX BY VALVE TYPE

		Q	P	Pagina
		[l/min]	[bar]	Page
<b>Valvola unidirezionale a cartuccia</b> <i>Check valve – cartridge type</i>				
	VNR40-C	40	350	<b>7</b>
	VNR40-08-C	40	350	<b>8</b>
	VNR60-C	60	350	<b>9</b>
	VNR80-C	80	300	<b>10</b>
	VNR130-C	130	300	<b>11</b>
	VNR200-C	200	300	<b>12</b>
	VNR200-20-C	200	300	<b>13</b>
	VNR10-C	80	350	<b>14</b>
	VNR22-C	80	350	<b>15</b>
<b>Valvola unidirezionale pilotata a cartuccia</b> <i>Pilot operated check valve – cartridge type</i>				
	VBP20-08-C	20	350	<b>16</b>
	VBP40-C	40	350	<b>17</b>
	VBP60-10-C	60	350	<b>18</b>
	VBP90-C	90	350	<b>19</b>
<b>Valvola unidirezionale pilotata in chiusura a cartuccia</b> <i>Check valve pilot to close – cartridge type</i>				
	VBPC-10-C	60	350	<b>20</b>
	VBPC-22-C	60	350	<b>21</b>
<b>Valvola paracadute a cartuccia</b> <i>Screw-in hose burst valve</i>				
	VPN-14	25	350	<b>22</b>
	VPN-38	50	350	<b>22</b>
	VPN-12	80	350	<b>22</b>
	VPN-34	150	350	<b>22</b>
<b>Valvola selettiva</b> <i>Shuttle valve</i>				
	VSF-14	20	350	<b>23</b>
	VSF-38	40	350	<b>23</b>
	VSF-12	60	350	<b>23</b>
	VSF-34	100	280	<b>23</b>
	VSM-14	20	350	<b>23</b>
	VSM-38	40	350	<b>23</b>
	VSM-12	60	350	<b>23</b>
	VSM-34	100	280	<b>23</b>

## INDICE PER TIPO DI VALVOLA INDEX BY VALVE TYPE

		Q	P	Pagina	
		[l/min]	[bar]	Page	
<b>Valvola unidirezionale</b> <i>Check valve</i>					
	VU14-SF	15	500	<b>24</b>	
	VU38-SF	30	500	<b>24</b>	
	VU12-SF	50	500	<b>24</b>	
	VU34-SF	90	350	<b>24</b>	
	VU14-SP	15	500	<b>24</b>	
	VU38-SP	30	500	<b>24</b>	
	VU12-SP	50	500	<b>24</b>	
	VU34-SP	90	350	<b>24</b>	
	VU10-SP	100	350	<b>24</b>	
	VU38-MM	25	350	<b>25</b>	
	VU12-MM	40	350	<b>25</b>	
<b>Valvola bidirezionale</b> <i>Double acting check valve</i>					
	VBD-E-38	30	350	<b>26</b>	
<b>Valvola di blocco a semplice effetto</b> <i>Single effect, pilot operated check valve</i>					
	VBS-14-SF	20	350	<b>27</b>	
	VBS-38-SF	35	350	<b>27</b>	
	VBS-12-SF	50	350	<b>27</b>	
	VBS-14-SP	20	350	<b>27</b>	
	VBS-38-SP	35	350	<b>27</b>	
	VBS-12-SP	50	350	<b>27</b>	
	VBS-34-SP	80	250	<b>27</b>	
	<i>In linea</i> <i>In line</i>				
	VBS-L-14	20	350	<b>28</b>	
	VBS-L-38	35	350	<b>28</b>	
	VBS-L-12	50	350	<b>28</b>	
	VBS-L-34	50	350	<b>28</b>	
	<i>Flangiabile</i> <i>Flangeable</i>				
	VBS-L-F-38	35	350	<b>29</b>	
	VBS-L-F-12	50	350	<b>29</b>	
<b>Valvola di blocco semplice effetto con pilotaggio separato</b> <i>Pilot operated check valve with vented pilot</i>					
	VBS-L-PS-14	20	350	<b>30</b>	
	VBS-L-PS-38	35	350	<b>30</b>	
	VBS-L-PS-12	50	350	<b>30</b>	
	VBS-F-PS-38	35	350	<b>31</b>	
	VBS-F-PS-12	50	350	<b>31</b>	

## INDICE PER TIPO DI VALVOLA INDEX BY VALVE TYPE

		Q	P	Pagina	
		[l/min]	[bar]	Page	
<b>Valvola di blocco pilotata semplice effetto con rubinetto manuale</b> <i>Single effect, pilot operated check valve with manual lever</i>					
	VBS-R-D-38	35	300	<b>32</b>	
	VBS-R-D-12	50	300	<b>32</b>	
	VBS-R-S-38	35	300	<b>33</b>	
	VBS-R-S-12	50	300	<b>33</b>	
	Flangiabile <i>Flangeable</i>				
	VBS-F-R-D-38	35	300	<b>34</b>	
VBS-F-R-S-38	35	300	<b>35</b>		
<b>Valvola di blocco a doppio effetto</b> <i>Double effect, pilot operated check valve</i>					
	VBD-14-SF	20	350	<b>36</b>	
	VBD-38-SF	35	350	<b>36</b>	
	VBD-12-SF	50	350	<b>36</b>	
	VBD-14-SP	20	350	<b>36</b>	
	VBD-38-SP	35	350	<b>36</b>	
	VBD-12-SP	50	350	<b>36</b>	
	VBD-34-SP	80	250	<b>36</b>	
	VBD-14-SF-M16X1.5	20	350	<b>37</b>	
	VBD-38-SF-M18X1.5	35	350	<b>37</b>	
	VBD-14-SP-M16X1.5	20	350	<b>37</b>	
	VBD-38-SP-M18X1.5	35	350	<b>37</b>	
	In linea <i>In line</i>				
	VBD-L-14	25	350	<b>38</b>	
	VBD-L-38	35	350	<b>38</b>	
	VBD-L-12	50	350	<b>38</b>	
	VBD-L-34	80	250	<b>38</b>	
Flangiabile <i>Flangeable</i>					
VBD-L-F-38	35	350	<b>39</b>		
VBD-L-F-12	50	350	<b>39</b>		
VBD-L-F-34	80	350	<b>39</b>		
<b>Valvola paracadute</b> <i>Hose burst valve</i>					
	VPN-14-MF	25	350	<b>40</b>	
	VPN-38-MF	50	350	<b>40</b>	
	VPN-12-MF	80	350	<b>40</b>	
	VPN-34-MF	150	350	<b>40</b>	
	VPN-14-FF	25	350	<b>40</b>	
	VPN-38-FF	50	350	<b>40</b>	
	VPN-12-FF	80	350	<b>40</b>	
VPN-34-FF	150	350	<b>40</b>		

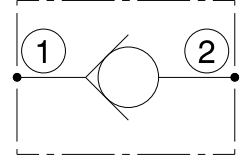
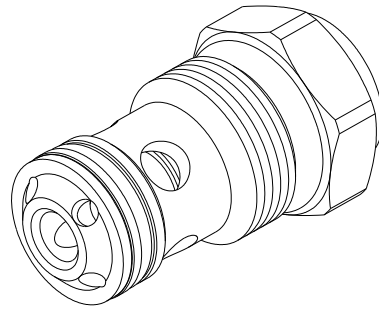
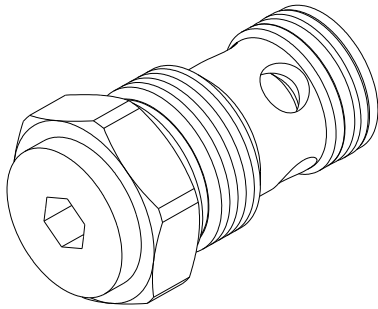
## INDICE ALFABETICO ALPHABETICAL INDEX

Modello	Pagina
Type	Page
VBD-12-SF	36
VBD-12-SP	36
VBD-14-SF	36
VBD-14-SF-M16X1.5	37
VBD-14-SP	36
VBD-14-SP-M16X1.5	37
VBD-34-SP	36
VBD-38-SF	36
VBD-38-SF-M18X1.5	37
VBD-38-SP	36
VBD-38-SP-M18X1.5	37
VBD-E-38	26
VBD-L-12	38
VBD-L-14	38
VBD-L-34	38
VBD-L-38	38
VBD-L-F-12	39
VBD-L-F-34	39
VBD-L-F-38	39
VBP20-08-C	20
VBP40-C	17
VBP60-10-C	18
VBP90-C	21
VBPC-10-C	20
VBPC-22-C	21
VBS-12-SF	27
VBS-12-SP	27
VBS-14-SF	27
VBS-14-SP	27
VBS-34-SP	27

Modello	Pagina
Type	Page
VBS-38-SF	27
VBS-38-SP	27
VBS-F-PS-12	31
VBS-F-PS-38	31
VBS-F-R-D-38	34
VBS-F-R-S-38	35
VBS-L-12	28
VBS-L-14	28
VBS-L-34	28
VBS-L-38	28
VBS-L-F-12	29
VBS-L-F-38	29
VBS-L-PS-12	30
VBS-L-PS-14	30
VBS-L-PS-38	30
VBS-R-D-12	32
VBS-R-D-38	32
VBS-R-S-12	33
VBS-R-S-38	33
VNR10-C	14
VNR130-C	11
VNR200-20-C	13
VNR200-C	12
VNR22-C	15
VNR40-08-C	8
VNR40-C	7
VNR60-C	9
VNR80-C	10
VPN-12	22
VPN-12-FF	40

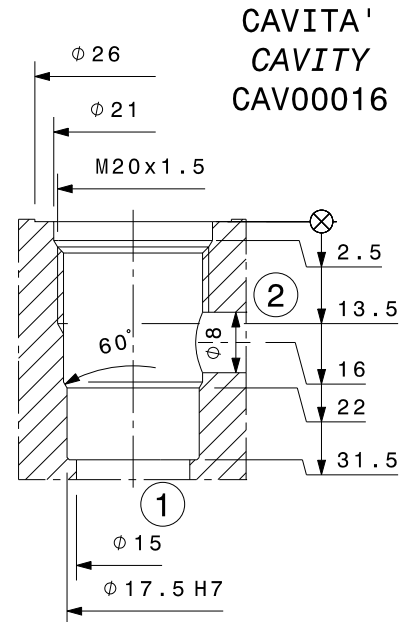
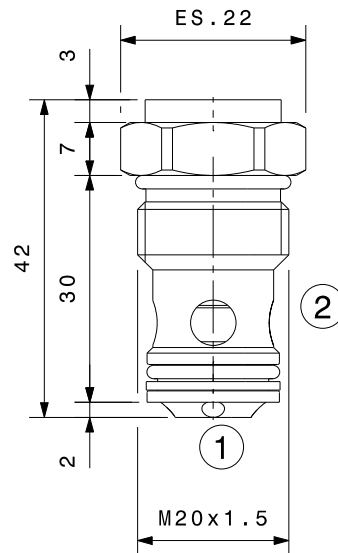
Modello	Pagina
Type	Page
VPN-12-MF	40
VPN-14	22
VPN-14-FF	40
VPN-14-MF	40
VPN-34	22
VPN-34-FF	40
VPN-34-MF	40
VPN-38	22
VPN-38-FF	40
VPN-38-MF	40
VSF-12	23
VSF-14	23
VSF-34	23
VSF-38	23
VSM-12	23
VSM-14	23
VSM-34	23
VSM-38	23
VU10-SP	24
VU12-MM	25
VU12-SF	24
VU12-SP	24
VU14-SF	24
VU14-SP	24
VU34-SF	24
VU34-SP	24
VU38-MM	25
VU38-SF	24
VU38-SP	24

Valvola unidirezionale a cartuccia  
 Check valve – cartridge type  
 mod. VNR40-C

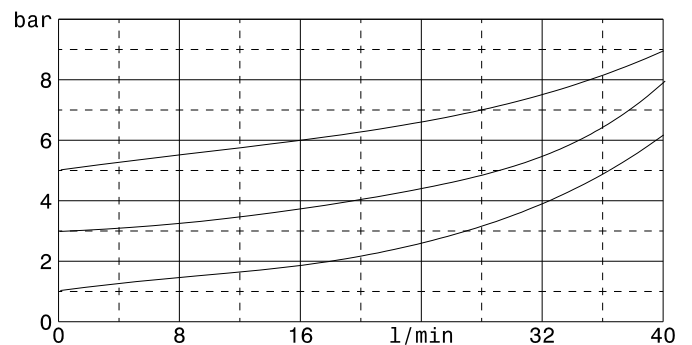
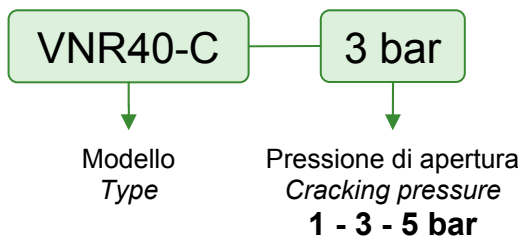


Portata massima Max flow	40 l/min
Pressione massima Max pressure	350 bar
Pressione di apertura Cracking pressure	<b>1 bar</b> <b>3 bar</b> <b>5 bar</b>
Coppia di serraggio Installation torque	27 ÷ 30 Nm

Dati e tarature ottenuti usando olio con viscosità 30 cSt a 50°C Performances and calibrations are carried out by using hydraulic oil with 30 cSt viscosity at 50°C	
Viscosità consigliate Recommended viscosity	10 ÷ 420 cSt
Temperatura di lavoro Working temperature	-20 ÷ +90 °C
Filtrazione assoluta Absolute filtration	25 µ

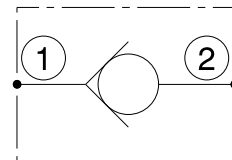
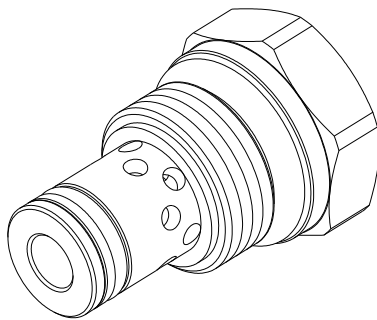
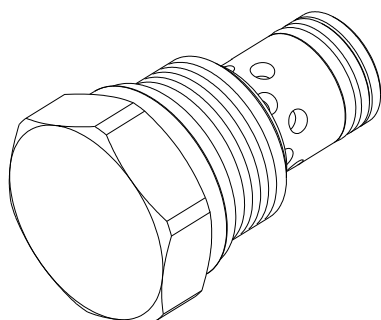


Sigla di ordinazione / Ordering code



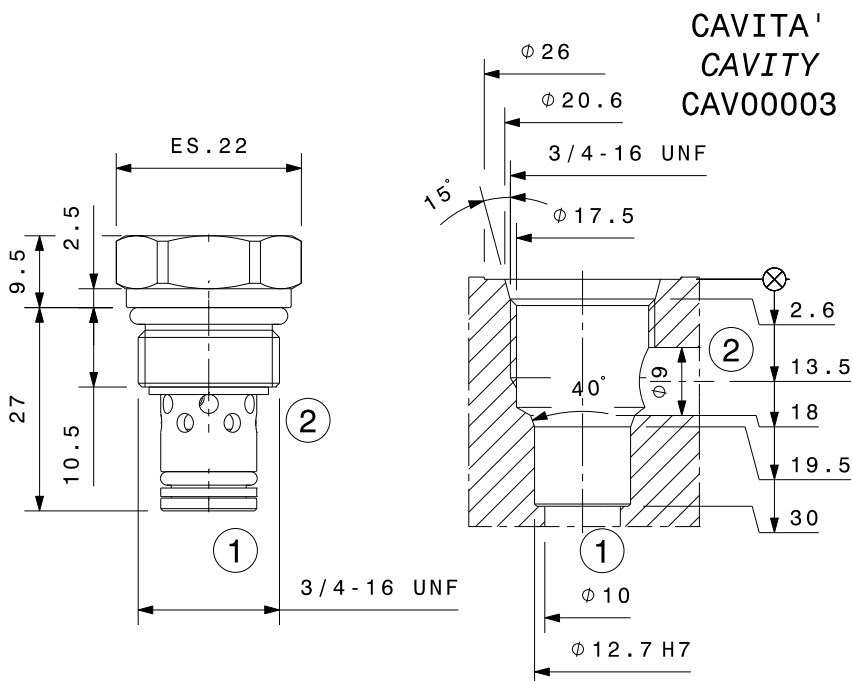
I dati non sono impegnativi, **CBF** si riserva di apportare modifiche senza preavviso.  
 The specifications are not binding, **CBF** reserves the right to introduce modifications without notice.

Valvola unidirezionale a cartuccia  
 Check valve – cartridge type  
 mod. **VNR40-08-C**



Portata massima Max flow	40 l/min
Pressione massima Max pressure	350 bar
Pressione di apertura Cracking pressure	<b>0,5 bar</b> <b>2 bar</b>
Coppia di serraggio Installation torque	27 ÷ 30 Nm

Dati e tarature ottenuti usando olio con viscosità 30 cSt a 50°C Performances and calibrations are carried out by using hydraulic oil with 30 cSt viscosity at 50°C	
Viscosità consigliate Recommended viscosity	10 ÷ 420 cSt
Temperatura di lavoro Working temperature	-20 ÷ +90 °C
Filtrazione assoluta Absolute filtration	25 µ

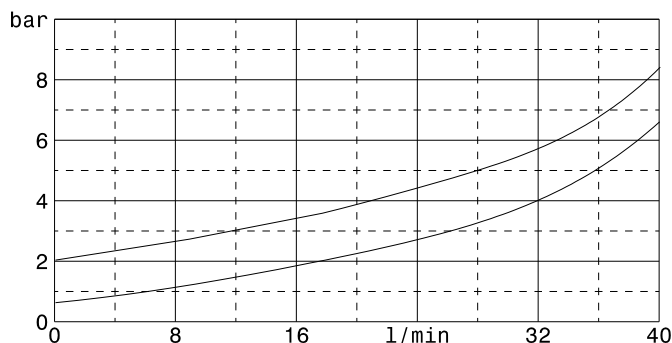


Sigla di ordinazione / Ordering code

**VNR40-08C** — **2 bar**

Modello  
Type

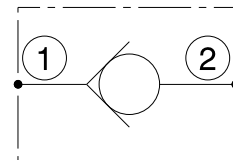
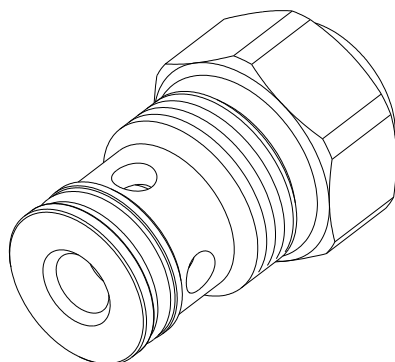
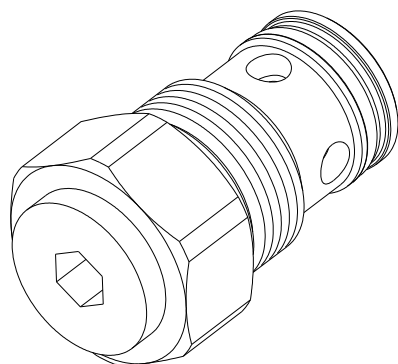
Pressione di apertura  
Cracking pressure  
**0,5 - 2 bar**



I dati non sono impegnativi, **CBF** si riserva di apportare modifiche senza preavviso.  
 The specifications are not binding, **CBF** reserves the right to introduce modifications without notice.

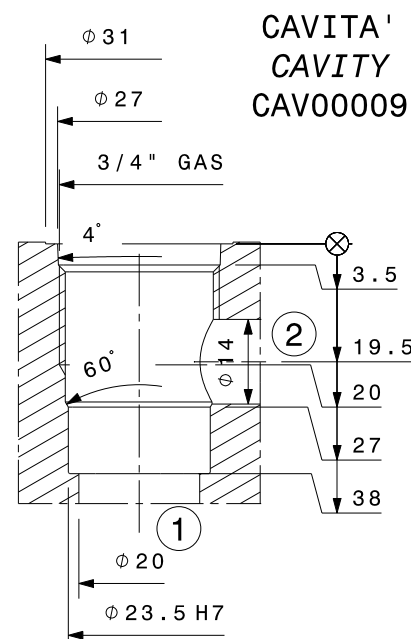
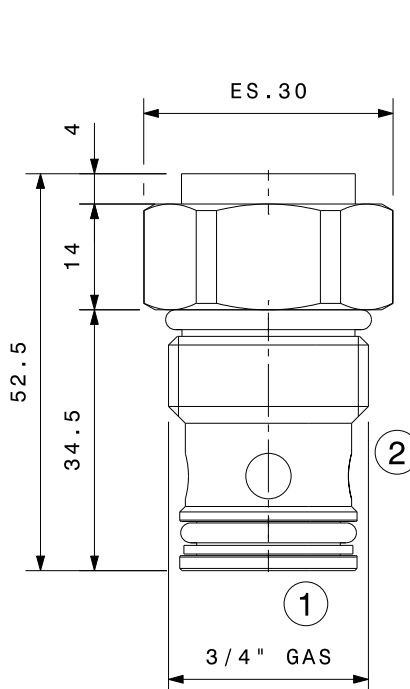


Valvola unidirezionale a cartuccia  
 Check valve – cartridge type  
 mod. VNR60-C

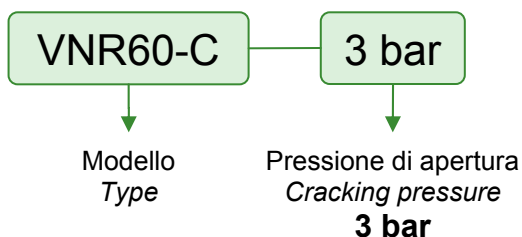


Portata massima Max flow	60 l/min
Pressione massima Max pressure	350 bar
Pressione di apertura Cracking pressure	<b>3 bar</b>
Coppia di serraggio Installation torque	140 ÷ 160 Nm

Dati e tarature ottenuti usando olio con viscosità 30 cSt a 50°C Performances and calibrations are carried out by using hydraulic oil with 30 cSt viscosity at 50°C	
Viscosità consigliate Recommended viscosity	10 ÷ 420 cSt
Temperatura di lavoro Working temperature	-20 ÷ +90 °C
Filtrazione assoluta Absolute filtration	25 µ

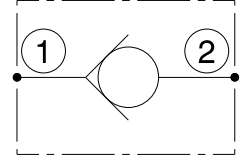
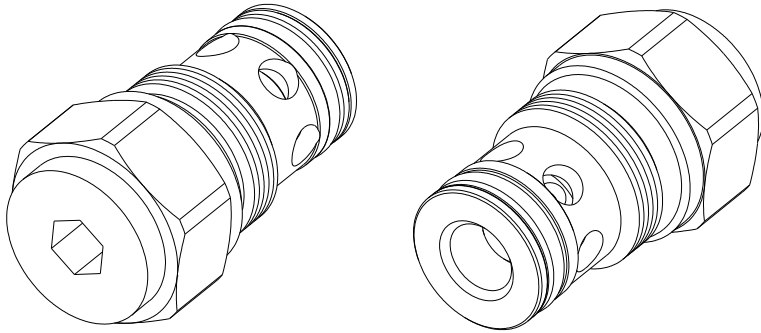


Sigla di ordinazione / Ordering code



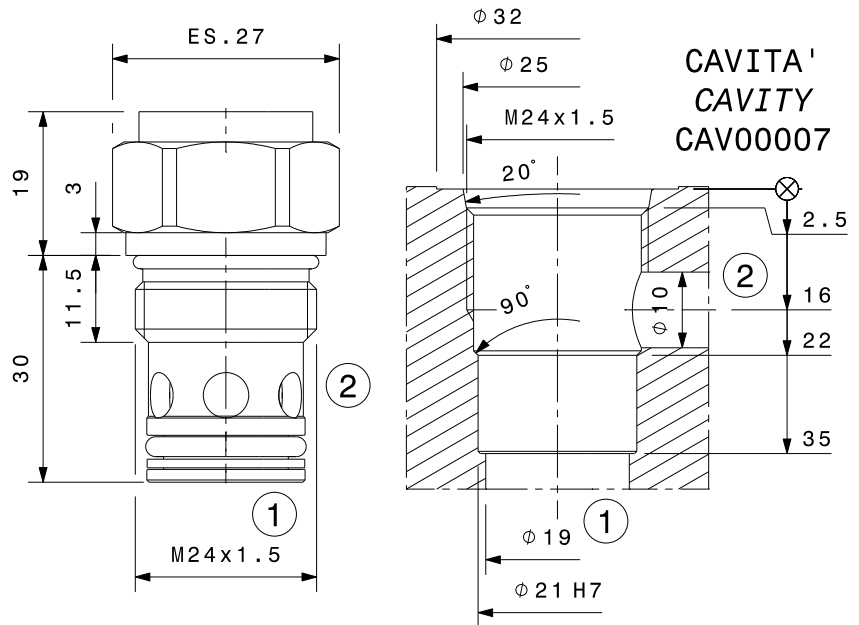
I dati non sono impegnativi, **CBF** si riserva di apportare modifiche senza preavviso.  
 The specifications are not binding, **CBF** reserves the right to introduce modifications without notice.

Valvola unidirezionale a cartuccia  
 Check valve – cartridge type  
 mod. VNR80-C

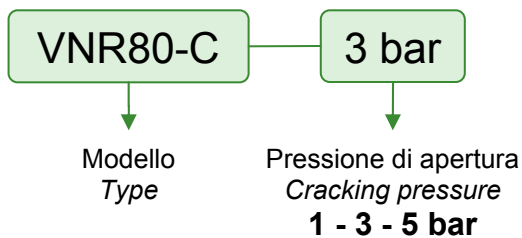


Portata massima Max flow	80 l/min
Pressione massima Max pressure	300 bar
Pressione di apertura Cracking pressure	<b>1 bar</b> <b>3 bar</b> <b>5 bar</b>
Coppia di serraggio Installation torque	65 ÷ 70 Nm

Dati e tarature ottenuti usando olio con viscosità 30 cSt a 50°C Performances and calibrations are carried out by using hydraulic oil with 30 cSt viscosity at 50°C	
Viscosità consigliate Recommended viscosity	10 ÷ 420 cSt
Temperatura di lavoro Working temperature	-20 ÷ +90 °C
Filtrazione assoluta Absolute filtration	25 µ

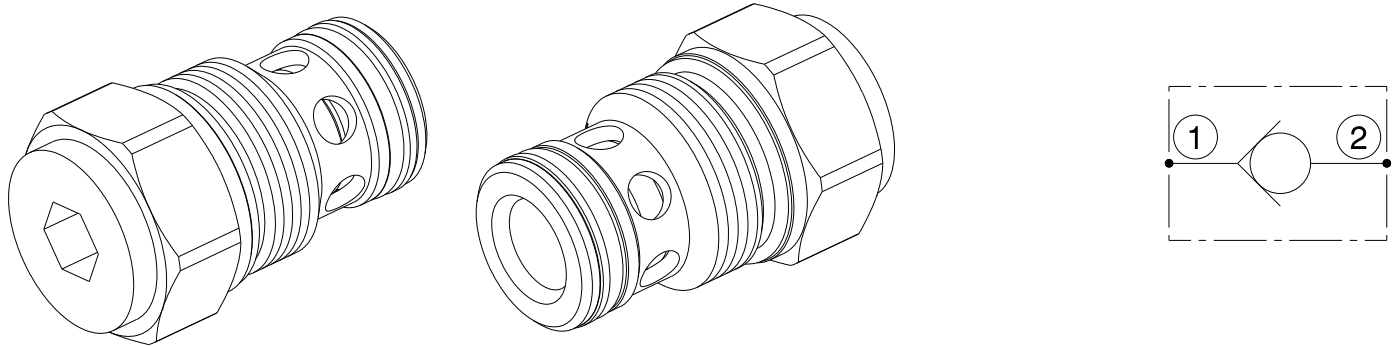


Sigla di ordinazione / Ordering code



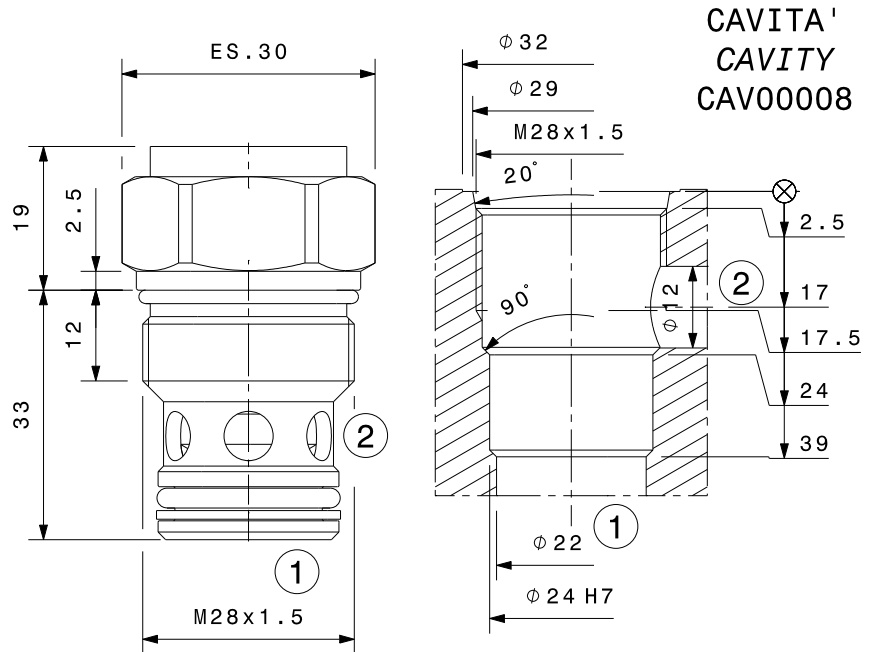
I dati non sono impegnativi, **CBF** si riserva di apportare modifiche senza preavviso.  
 The specifications are not binding, **CBF** reserves the right to introduce modifications without notice.

Valvola unidirezionale a cartuccia  
 Check valve – cartridge type  
 mod. VNR130-C

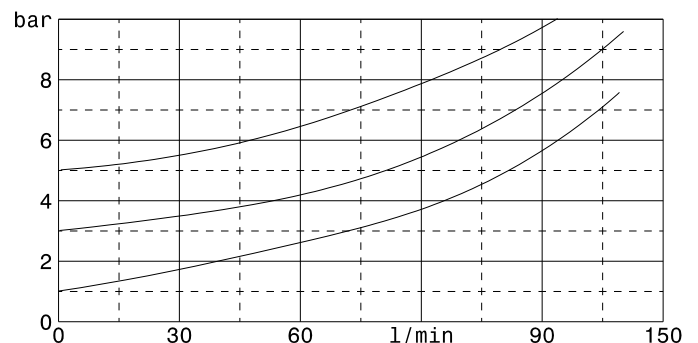
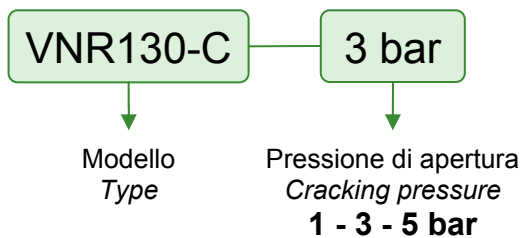


Portata massima <i>Max flow</i>	130 l/min
Pressione massima <i>Max pressure</i>	300 bar
Pressione di apertura <i>Cracking pressure</i>	<b>1 bar</b> <b>3 bar</b> <b>5 bar</b>
Coppia di serraggio <i>Installation torque</i>	140 ÷ 160 Nm

Dati e tarature ottenuti usando olio con viscosità 30 cSt a 50°C <i>Performances and calibrations are carried out by using hydraulic oil with 30 cSt viscosity at 50°C</i>	
Viscosità consigliate <i>Recommended viscosity</i>	10 ÷ 420 cSt
Temperatura di lavoro <i>Working temperature</i>	-20 ÷ +90 °C
Filtrazione assoluta <i>Absolute filtration</i>	25 µ

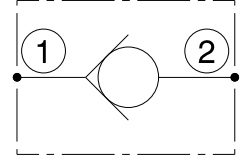
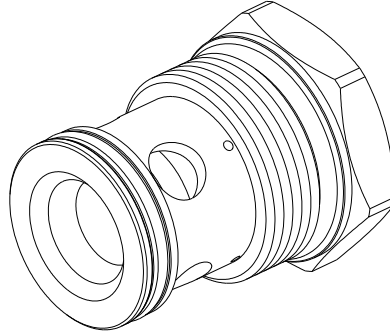
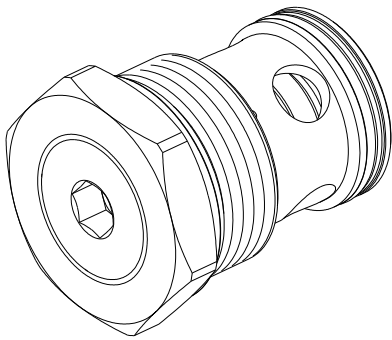


Sigla di ordinazione / Ordering code



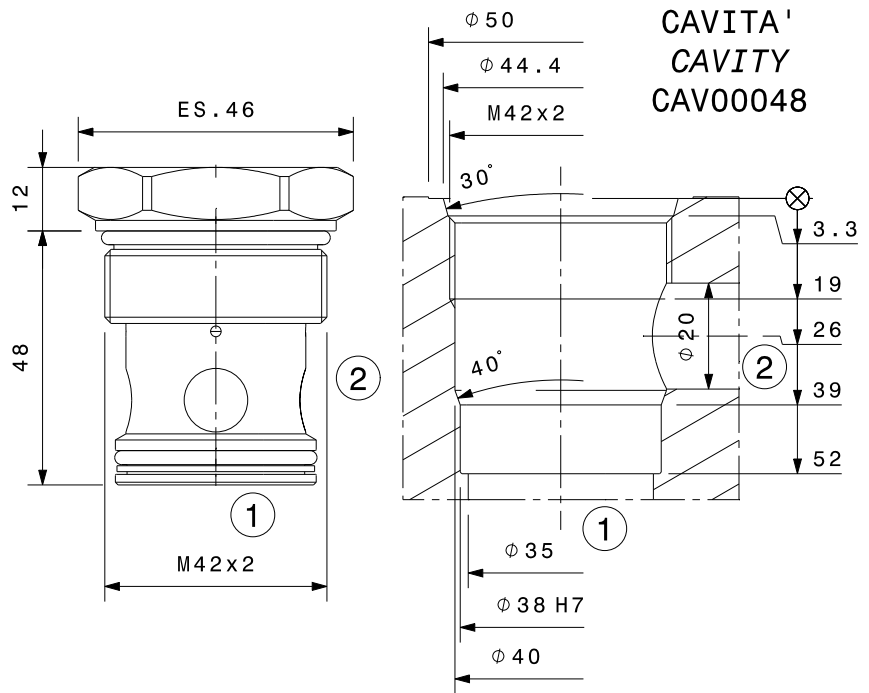
I dati non sono impegnativi, **CBF** si riserva di apportare modifiche senza preavviso.  
 The specifications are not binding, **CBF** reserves the right to introduce modifications without notice.

Valvola unidirezionale a cartuccia  
 Check valve – cartridge type  
 mod. VNR200-C

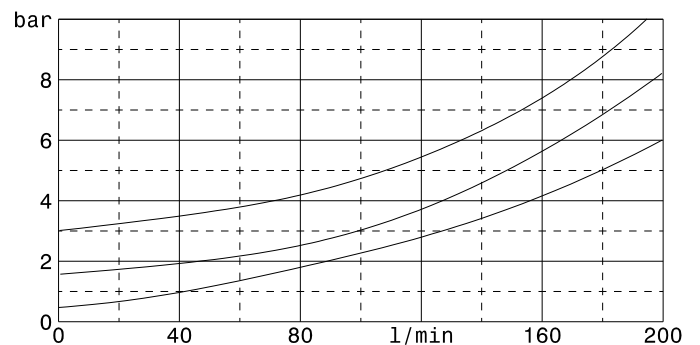
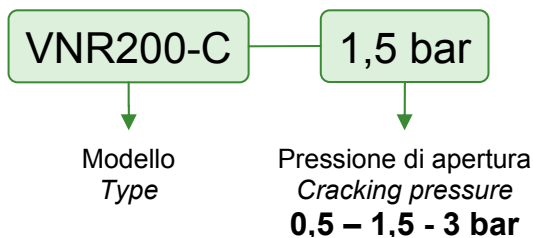


Portata massima Max flow	200 l/min
Pressione massima Max pressure	300 bar
Pressione di apertura Cracking pressure	<b>0.5 bar</b> <b>1.5 bar</b> <b>3 bar</b>
Coppia di serraggio Installation torque	200 ÷ 220 Nm

Dati e tarature ottenuti usando olio con viscosità 30 cSt a 50°C Performances and calibrations are carried out by using hydraulic oil with 30 cSt viscosity at 50°C	
Viscosità consigliate Recommended viscosity	10 ÷ 420 cSt
Temperatura di lavoro Working temperature	-20 ÷ +90 °C
Filtrazione assoluta Absolute filtration	25 µ

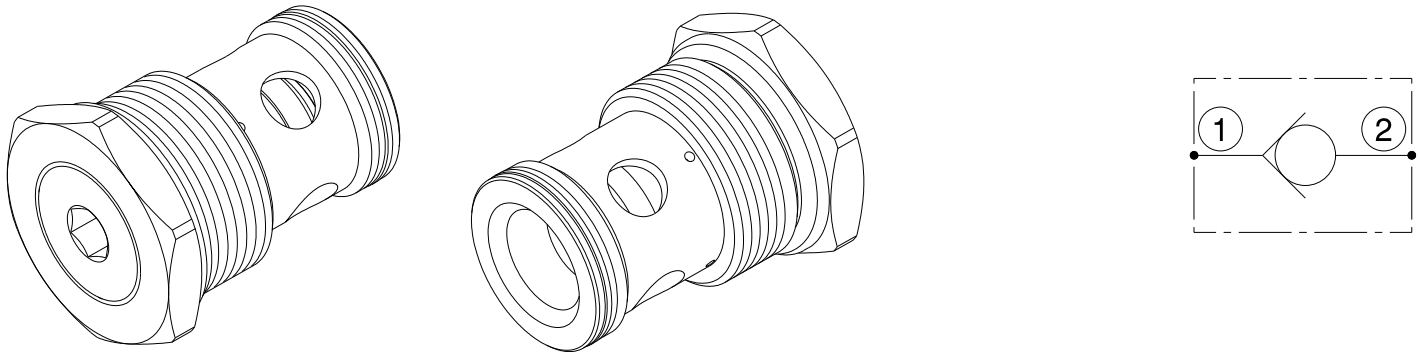


Sigla di ordinazione / Ordering code



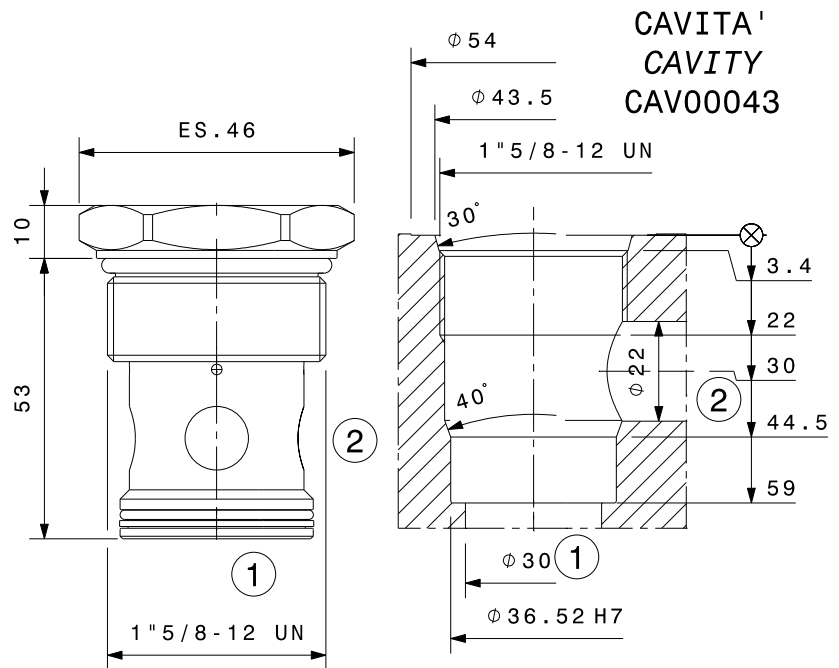
I dati non sono impegnativi, **CBF** si riserva di apportare modifiche senza preavviso.  
 The specifications are not binding, **CBF** reserves the right to introduce modifications without notice.

Valvola unidirezionale a cartuccia  
 Check valve – cartridge type  
 mod. VNR200-20-C



Portata massima Max flow	200 l/min
Pressione massima Max pressure	300 bar
Pressione di apertura Cracking pressure	<b>0.5 bar</b> <b>1.5 bar</b> <b>3 bar</b>
Coppia di serraggio Installation torque	200 ÷ 220 Nm

Dati e tarature ottenuti usando olio con viscosità 30 cSt a 50°C Performances and calibrations are carried out by using hydraulic oil with 30 cSt viscosity at 50°C	
Viscosità consigliate Recommended viscosity	10 ÷ 420 cSt
Temperatura di lavoro Working temperature	-20 ÷ +90 °C
Filtrazione assoluta Absolute filtration	25 µ

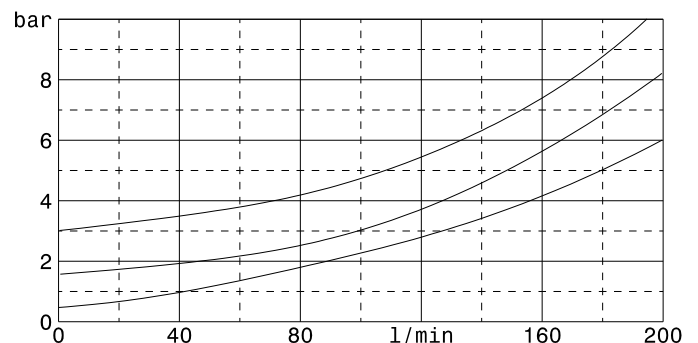


Sigla di ordinazione / Ordering code

VNR200-20-C — 1,5 bar

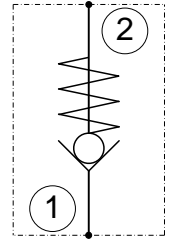
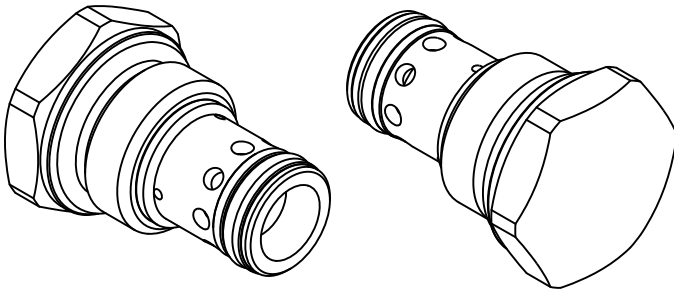
Modello  
Type

Pressione di apertura  
Cracking pressure  
**0,5 – 1,5 - 3 bar**



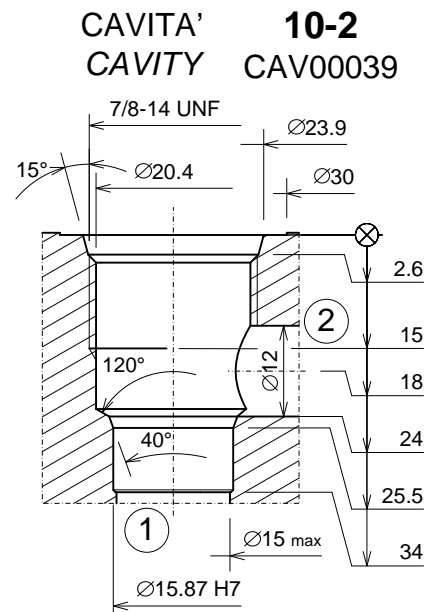
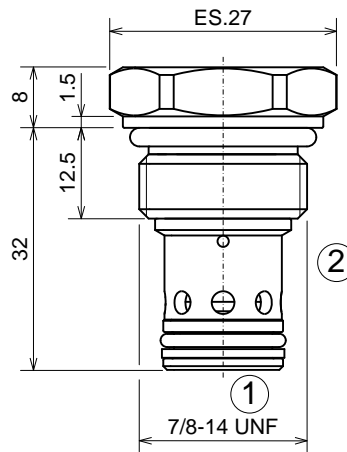
I dati non sono impegnativi, **CBF** si riserva di apportare modifiche senza preavviso.  
 The specifications are not binding, **CBF** reserves the right to introduce modifications without notice.

Valvola unidirezionale a cartuccia  
 Check valve – cartridge type  
 mod. VNR-10-C

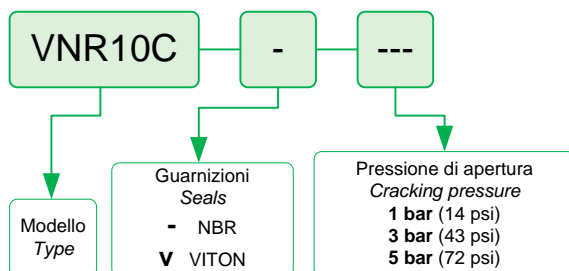


Portata massima Maximum flow	80 l/min 21 gpm
Pressione massima Maximum pressure	350 bar 5000 psi
Pressione di apertura Cracking pressure	1 bar - 14 psi 3 bar - 43 psi 5 bar - 73 psi
Coppia di serraggio Installation torque	45 ÷ 50 Nm 33 ÷ 37 lbf ft

Dati e tarature ottenuti usando olio a 30 cSt a 50°C.  
 Viscosità raccomandate 10 ÷ 420 cSt. Temperature di lavoro -20÷+90 °C.  
 Filtrazione assoluta 25 µ.  
 Performances and calibrations are carried out by using hydraulic oil with 30 cSt viscosity at 50°C (122 F). Recommended viscosity 10 ÷ 420 cSt, working temperature -20÷+90 °C (-4 F÷194 F). Absolute filtration 25 µ.

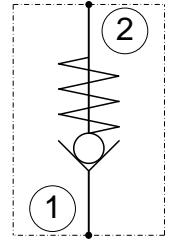
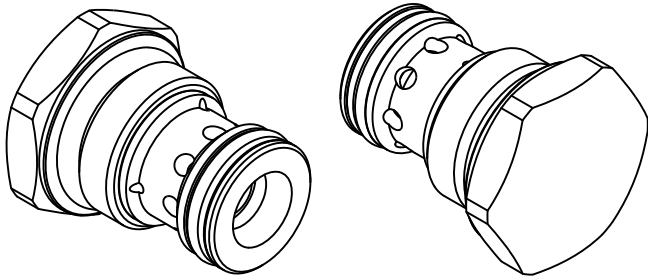


Sigla di ordinazione – Ordering code



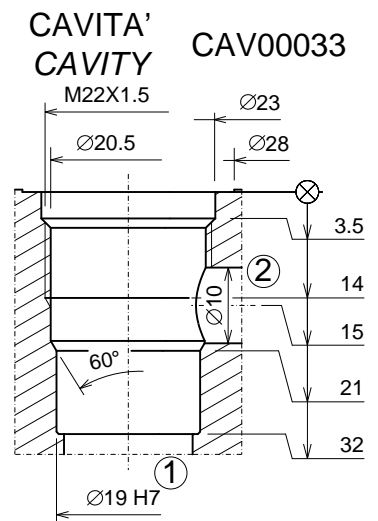
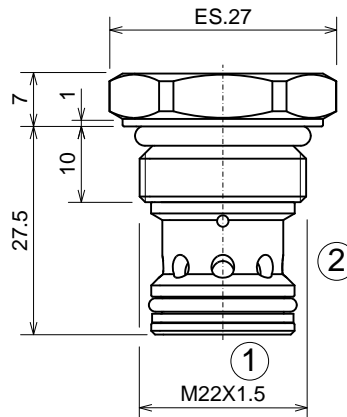
I dati non sono impegnativi, CBF si riserva di apportare modifiche senza preavviso.  
 The specifications are not binding. CBF reserves the right to introduce modifications without notice.

Valvola unidirezionale a cartuccia  
 Check valve – cartridge type  
 mod. VNR-22-C

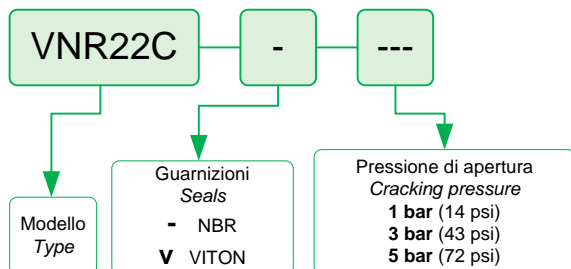


Portata massima Maximum flow	80 l/min 21 gpm
Pressione massima Maximum pressure	350 bar 5000 psi
Pressione di apertura Cracking pressure	1 bar - 14 psi 3 bar - 43 psi 5 bar - 73 psi
Coppia di serraggio Installation torque	45 ÷ 50 Nm 33 ÷ 37 lbf ft

Dati e tarature ottenuti usando olio a 30 cSt a 50°C.  
 Viscosità raccomandate 10 ÷ 420 cSt. Temperature di lavoro -20÷+90 °C.  
 Filtrazione assoluta 25 µ.  
 Performances and calibrations are carried out by using hydraulic oil with 30 cSt viscosity at 50°C (122 F). Recommended viscosity 10 ÷ 420 cSt, working temperature -20÷+90 °C (-4 F÷194 F). Absolute filtration 25 µ.



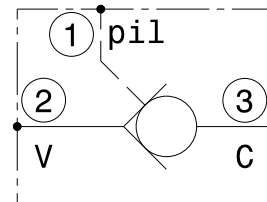
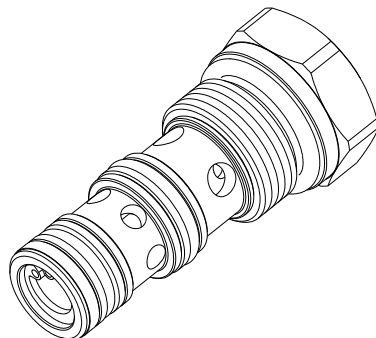
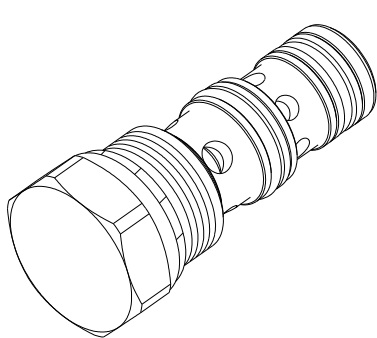
Sigla di ordinazione – Ordering code



I dati non sono impegnativi, CBF si riserva di apportare modifiche senza preavviso.  
 The specifications are not binding. CBF reserves the right to introduce modifications without notice.

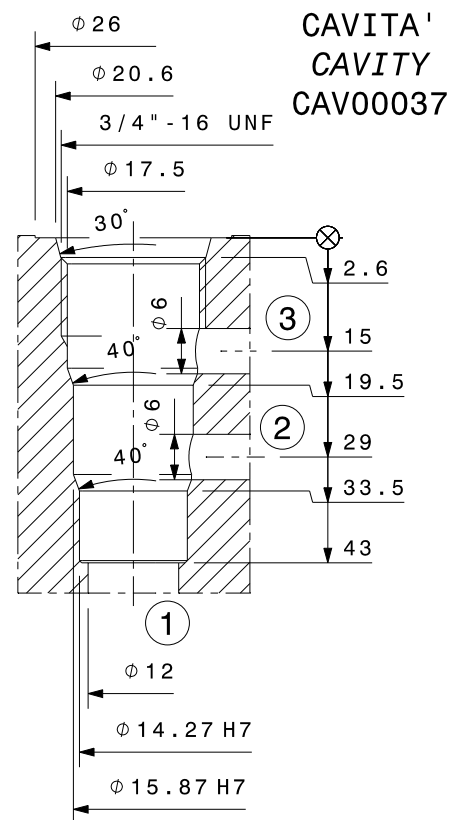
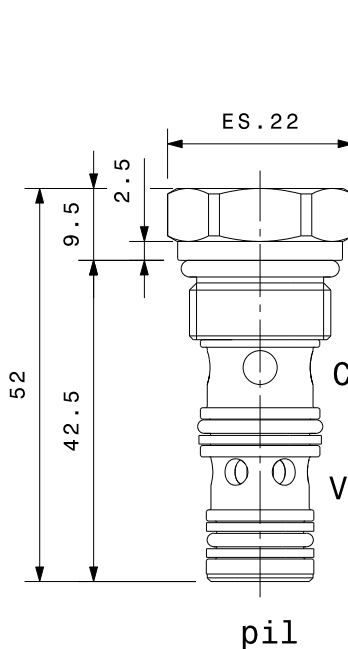
Valvola unidirezionale pilotata a cartuccia  
 Pilot operated check valve – cartridge type

mod. **VBP20-08-C**



Portata massima Max flow	20 l/min
Pressione massima Max pressure	350 bar
Rapporto di pilotaggio Pilot ratio	3:1
Pressione di apertura Cracking pressure	<b>3 bar</b>
Coppia di serraggio Installation torque	30 ÷ 35 Nm

Dati e tarature ottenuti usando olio con viscosità 30 cSt a 50°C Performances and calibrations are carried out by using hydraulic oil with 30 cSt viscosity at 50°C	
Viscosità consigliate Recommended viscosity	10 ÷ 420 cSt
Temperature di lavoro Working temperature	-20 ÷ +90 °C
Filtrazione assoluta Absolute filtration	25 µ



Sigla di ordinazione / Ordering code

**VBP20-08-C**

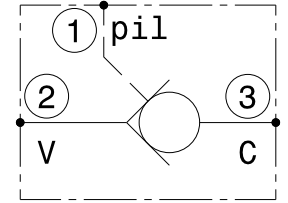
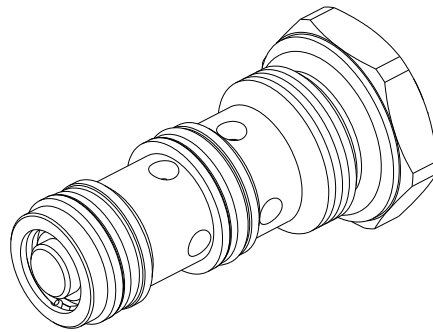
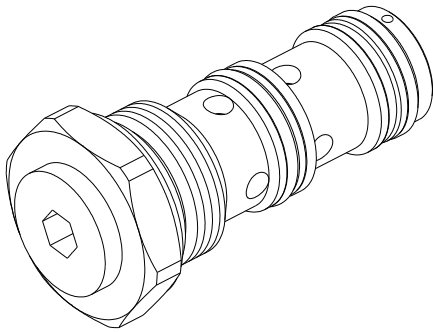
Modello  
Type

I dati non sono impegnativi, **CBF** si riserva di apportare modifiche senza preavviso.  
 The specifications are not binding, **CBF** reserves the right to introduce modifications without notice.



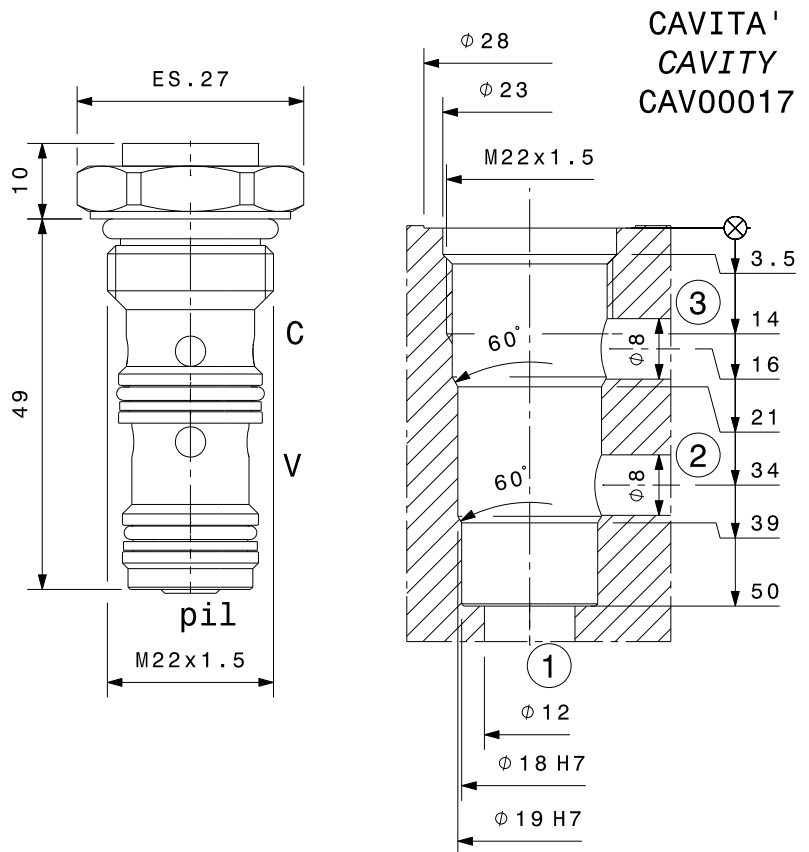
Valvola unidirezionale pilotata a cartuccia  
*Pilot operated check valve – cartridge type*

mod. **VBP40-C**



Portata massima <i>Max flow</i>	40 l/min
Pressione massima <i>Max pressure</i>	350 bar
Rapporto di pilotaggio <i>Pilot ratio</i>	3,4:1
Pressione di apertura <i>Cracking pressure</i>	<b>3 bar</b>
Coppia di serraggio <i>Installation torque</i>	65 ÷ 70 Nm

Dati e tarature ottenuti usando olio con viscosità 30 cSt a 50°C <i>Performaces and calibrations are carried out by using hydraulic oil with 30 cSt viscosity at 50°C</i>	
Viscosità consigliate <i>Recommended viscosity</i>	10 ÷ 420 cSt
Temperature di lavoro <i>Working temperature</i>	-20 ÷ +90 °C
Filtrazione assoluta <i>Absolute filtration</i>	25 µ



Sigla di ordinazione / Ordering code

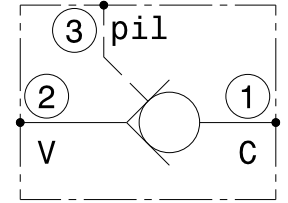
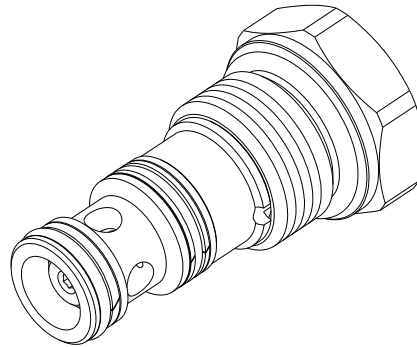
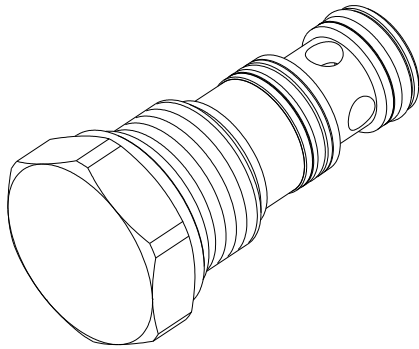
**VBP40-C**

Modello  
Type

I dati non sono impegnativi, **CBF** si riserva di apportare modifiche senza preavviso.  
 The specifications are not binding, **CBF** reserves the right to introduce modifications without notice.

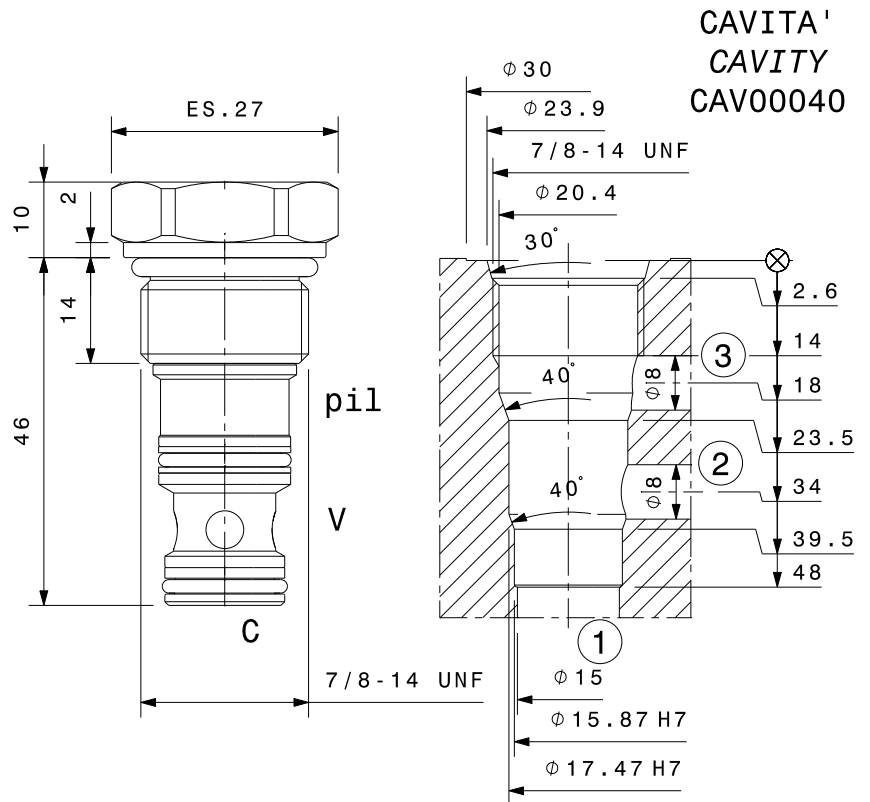
Valvola unidirezionale pilotata a cartuccia  
 Pilot operated check valve – cartridge type

mod. **VBP60-10-C**



Portata massima <i>Max flow</i>	60 l/min
Pressione massima <i>Max pressure</i>	350 bar
Rapporto di pilotaggio <i>Pilot ratio</i>	4:1
Pressione di apertura <i>Cracking pressure</i>	<b>1 bar</b>
Coppia di serraggio <i>Installation torque</i>	50 ÷ 60 Nm

Dati e tarature ottenuti usando olio con viscosità 30 cSt a 50°C <i>Performaces and calibrations are carried out by using hydraulic oil with 30 cSt viscosity at 50°C</i>	
Viscosità consigliate <i>Recommended viscosity</i>	10 ÷ 420 cSt
Temperature di lavoro <i>Working temperature</i>	-20 ÷ +90 °C
Filtrazione assoluta <i>Absolute filtration</i>	25 µ



Sigla di ordinazione / Ordering code

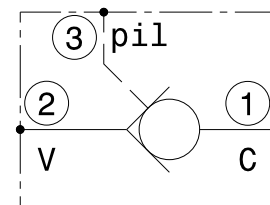
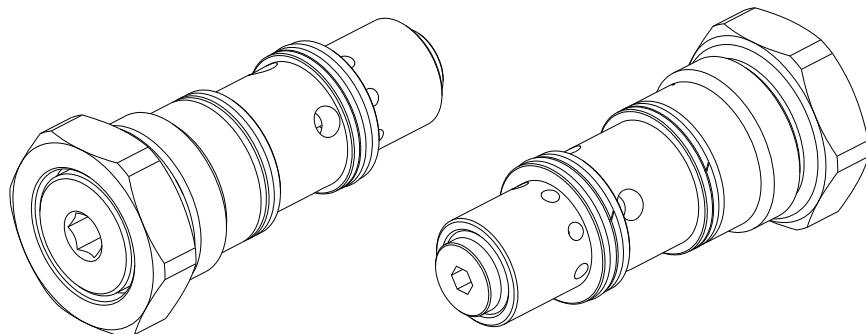
**VBP60-10-C**

Modello  
Type

I dati non sono impegnativi, **CBF** si riserva di apportare modifiche senza preavviso.  
 The specifications are not binding, **CBF** reserves the right to introduce modifications without notice.

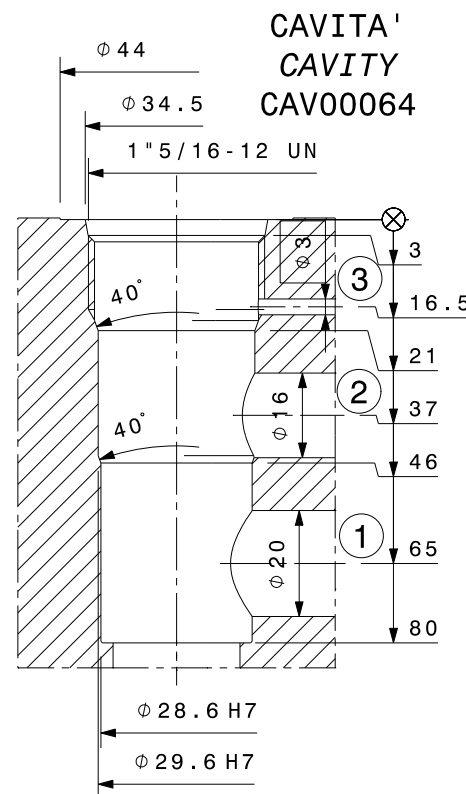
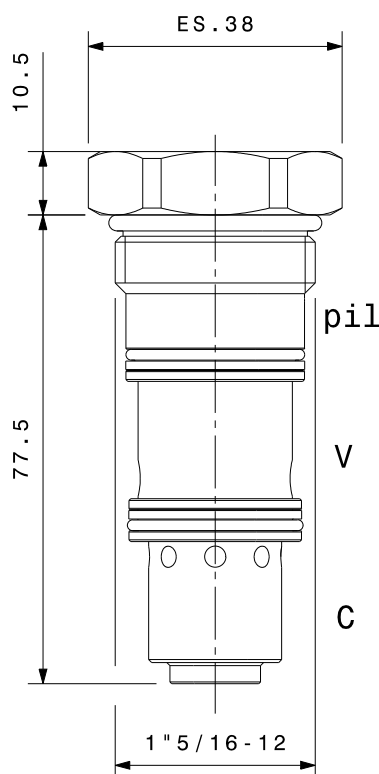
Valvola unidirezionale pilotata a cartuccia  
 Pilot operated check valve – cartridge type

mod. **VBP90-C**



Portata massima Max flow	90 l/min
Pressione massima Max pressure	350 bar
Rapporto di pilotaggio Pilot ratio	4:1
Pressione di apertura Cracking pressure	<b>0,5 bar</b>
Coppia di serraggio Installation torque	180 ÷ 200 Nm

Dati e tarature ottenuti usando olio con viscosità 30 cSt a 50°C Performances and calibrations are carried out by using hydraulic oil with 30 cSt viscosity at 50°C	
Viscosità consigliate Recommended viscosity	10 ÷ 420 cSt
Temperature di lavoro Working temperature	-20 ÷ +90 °C
Filtrazione assoluta Absolute filtration	25 µ



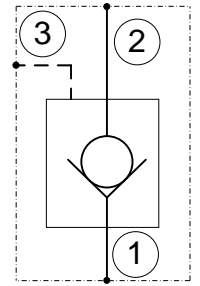
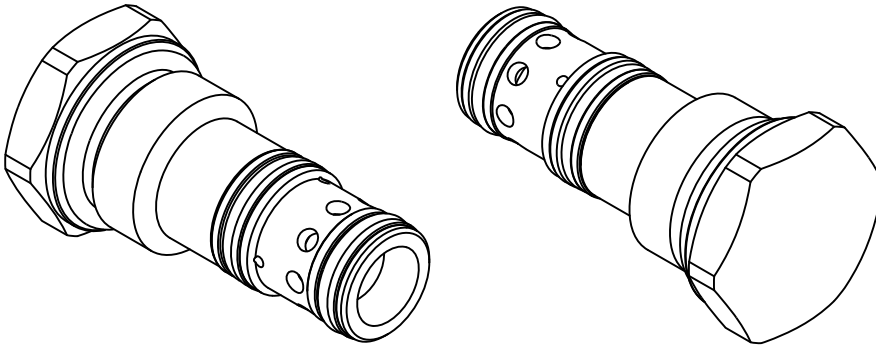
Sigla di ordinazione / Ordering code

**VBP90-C**

Modello  
Type

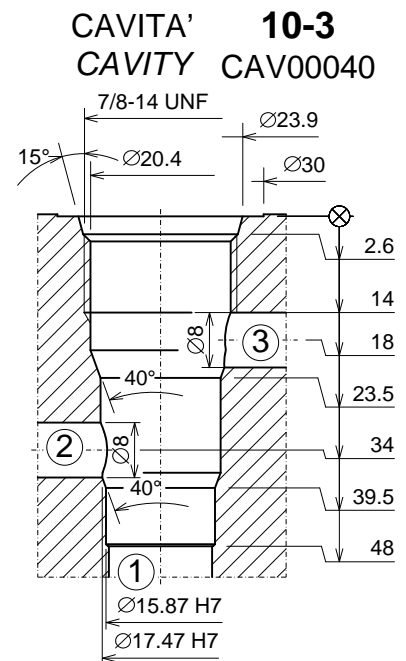
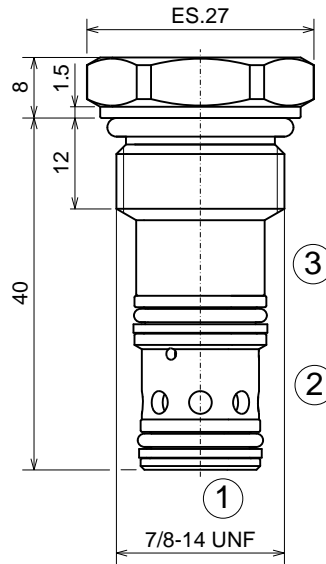
I dati non sono impegnativi, **CBF** si riserva di apportare modifiche senza preavviso.  
 The specifications are not binding, **CBF** reserves the right to introduce modifications without notice.

Valvola di blocco pilotata in chiusura a cartuccia  
 Check valve, pilot to close – cartridge type  
 mod. VBPC-10-C

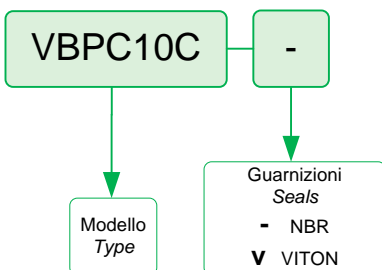


Portata massima Maximum flow	60 l/min 16 gpm
Pressione massima Maximum pressure	350 bar 5000 psi
Rapporto di pilotaggio Pilot ratio	1,5:1
Pressione di apertura Cracking pressure	3,5 bar 50 psi
Coppia di serraggio Installation torque	40 ÷ 45 Nm 30 ÷ 34 lbf ft

Dati e tarature ottenuti usando olio a 30 cSt a 50°C.  
 Viscosità raccomandate 10 ÷ 420 cSt. Temperature di lavoro -20÷+90 °C.  
 Filtrazione assoluta 25 µ.  
 Performances and calibrations are carried out by using hydraulic oil with 30 cSt viscosity at 50°C (122 F). Recommended viscosity 10 ÷ 420 cSt, working temperature -20÷+90 °C (-4 F÷194 F). Absolute filtration 25 µ.

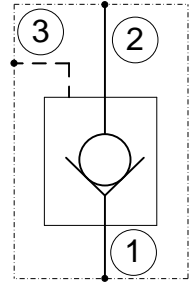
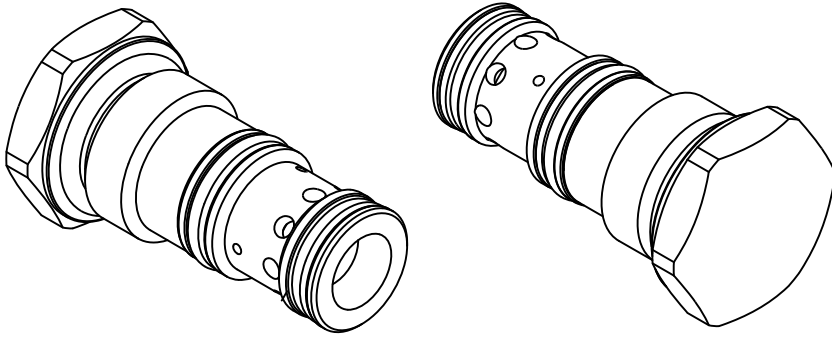


Sigla di ordinazione – Ordering code



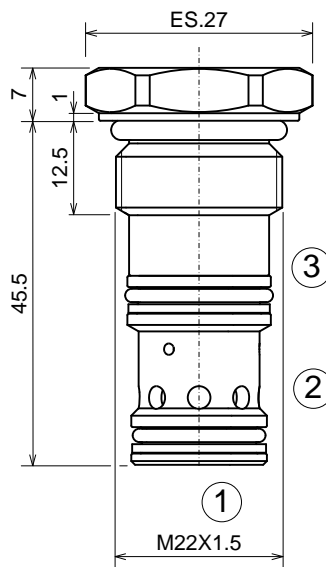
I dati non sono impegnativi, CBF si riserva di apportare modifiche senza preavviso.  
 The specifications are not binding. CBF reserves the right to introduce modifications without notice.

Valvola di blocco pilotata in chiusura a cartuccia  
 Check valve, pilot to close – cartridge type  
 mod. VBPC-22-C

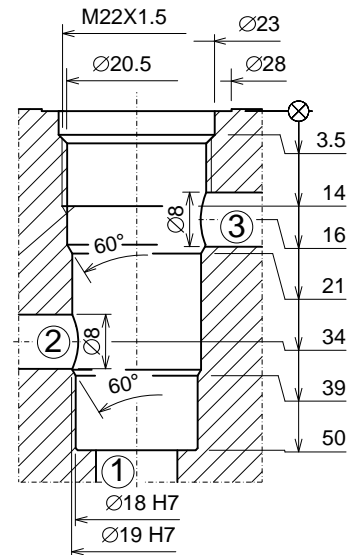


Portata massima Maximum flow	60 l/min 16 gpm
Pressione massima Maximum pressure	350 bar 5000 psi
Rapporto di pilotaggio Pilot ratio	1,5:1
Pressione di apertura Cracking pressure	3,5 bar 50 psi
Coppia di serraggio Installation torque	40 ÷ 45 Nm 30 ÷ 34 lbf ft

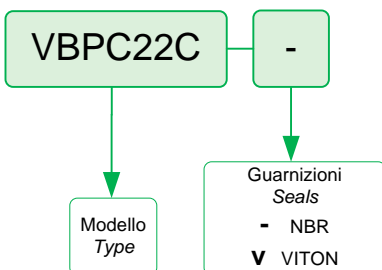
Dati e tarature ottenuti usando olio a 30 cSt a 50°C.  
 Viscosità raccomandate 10 ÷ 420 cSt. Temperature di lavoro -20÷+90 °C.  
 Filtrazione assoluta 25 µ.  
 Performances and calibrations are carried out by using hydraulic oil with 30 cSt viscosity at 50°C (122 F). Recommended viscosity 10 ÷ 420 cSt, working temperature -20÷+90 °C (-4 F÷194 F). Absolute filtration 25 µ.



CAVITA' CAVITY CAV00017



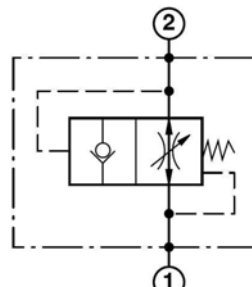
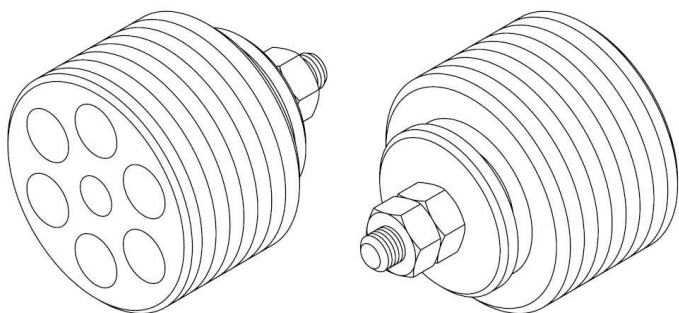
Sigla di ordinazione – Ordering code



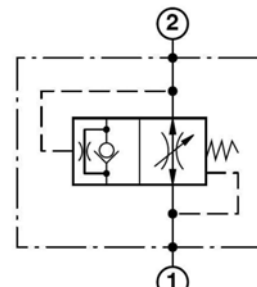
I dati non sono impegnativi, CBF si riserva di apportare modifiche senza preavviso.

The specifications are not binding. CBF reserves the right to introduce modifications without notice.

**Valvola paracadute**  
**Screw-in cartridge hose burst valve**  
**mod. VPN**



Valvola di blocco completo del carico  
Load full lock valve



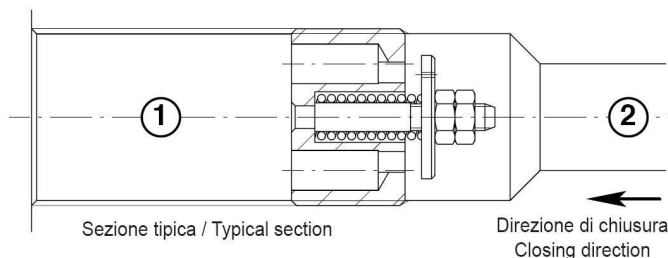
Valvola di abbassamento lento del carico  
Load slow motion valve

Dopo il nostro montaggio le valvole risultano regolate rispettivamente a circa 0.5mm (per G=1/4" gas e G=3/8" gas) e 0.7mm (per G=1/2" gas e G=3/4" gas).

After our assembly procedure the valves are respectively set at about 0.5mm (for G=1/4" gas and G=3/8" gas) and 0.7mm (for G=1/2" gas and G=3/4" gas).

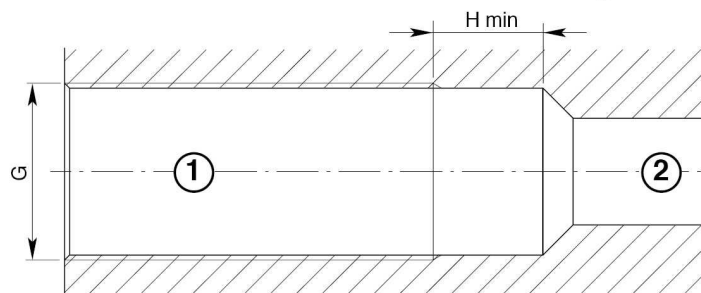
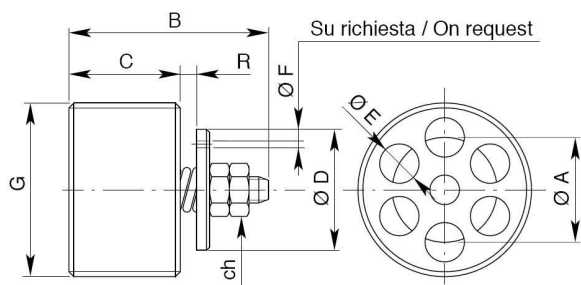
Dati e tarature ottenuti usando olio con viscosità 30 cSt a 50°C  
Performances and calibrations are carried out by using hydraulic oil with 30 cSt viscosity at 50°C

Viscosità consigliate Recommended viscosity	10 ÷ 420 cSt
Temperature di lavoro Working temperature	-20 ÷ +90 °C
Filtrazione assoluta Absolute filtration	25 µ



Sezione tipica / Typical section

Direzione di chiusura  
Closing direction

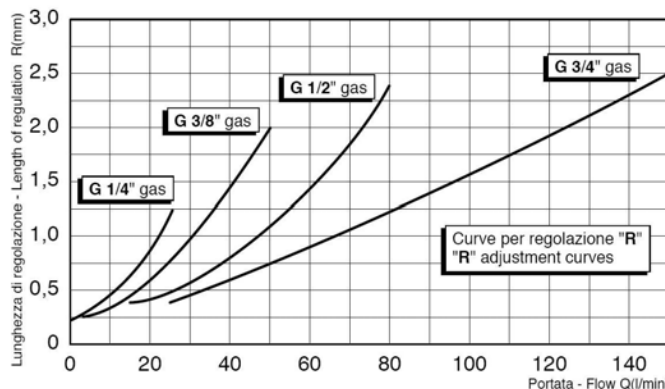


Modello Type	G	A	B	C	D	E	H	ch	Coppia di serraggio Torque Nm	Portata max Max flow l/min	Pressione massima Max pressure bar
<b>VPN-14</b>	1/4"GAS	8.5	17.5	8	9.5	2.4	11	5.5	2	25	350
<b>VPN-38</b>	3/8"GAS	10.5	23	10.5	12.5	3.5	11	5.5	3	50	350
<b>VPN-12</b>	1/2"GAS	13	25	12	15	4.5	15	7	4	80	350
<b>VPN-34</b>	3/4"GAS	16	30.5	17	18	6	16	7	10	150	350

**Sigla di ordinazione / Ordering code**

**VPN-14**

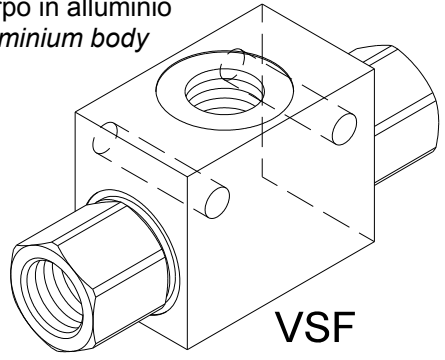
Modello  
Type



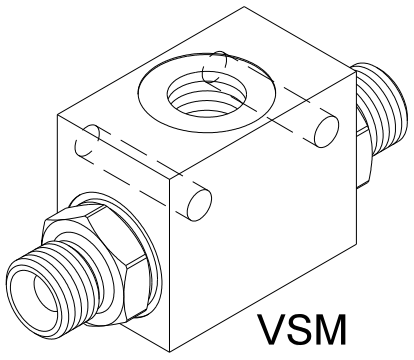
I dati non sono impegnativi, **CBF** si riserva di apportare modifiche senza preavviso.  
The specifications are not binding, **CBF** reserves the right to introduce modifications without notice.

Valvola selettiva  
 Shuttle valve  
 mod. VSF / VSM

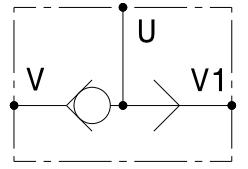
Corpo in alluminio  
 Aluminium body



VSF

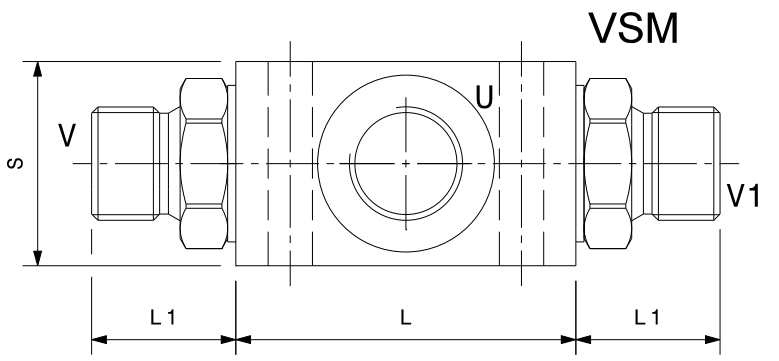
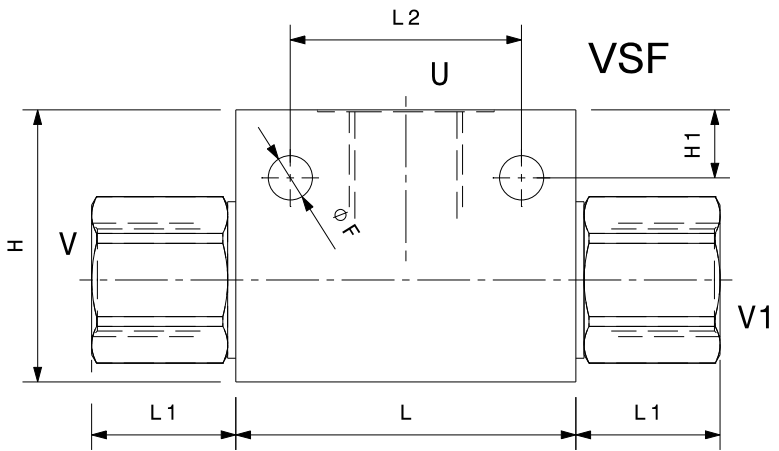


VSM



Modello Type	V V1 U	Portata massima Max flow l/min	Pressione massima Max pressure bar
VSF-14	1/4" GAS	20	350
VSF-38	3/8" GAS	40	350
VSF-12	1/2" GAS	60	350
VSF-34	3/4" GAS	100	280
VSM-14	1/4" GAS	20	350
VSM-38	3/8" GAS	40	350
VSM-12	1/2" GAS	60	350
VSM-34	3/4" GAS	100	280

Dati e tarature ottenuti usando olio con viscosità 30 cSt a 50°C Performaces and calibrations are carried out by using hydraulic oil with 30 cSt viscosity at 50°C	
Viscosità consigliate Recommended viscosity	10 ÷ 420 cSt
Temperatura di lavoro Working temperature	-20 ÷ +90 °C
Filtrazione assoluta Absolute filtration	25 µ



Dimensioni Dimensions	L	L1	L2	H	H1	S	F
VSF-14	40	33	27	40	6	30	6.5
VSF-38	50	21	34	40	10	30	6.5
VSF-12	60	28	40	50	10	30	6.5
VSF-34	60	27	45	60	10	40	8.5
VSM-14	40	10	27	40	6	30	6.5
VSM-38	50	21	34	40	10	30	6.5
VSM-12	60	26	40	50	10	30	6.5
VSM-34	60	30	45	60	10	40	8.5

Sigla di ordinazione / Ordering code

VSM-38

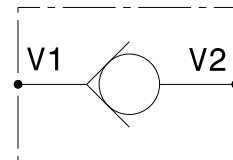
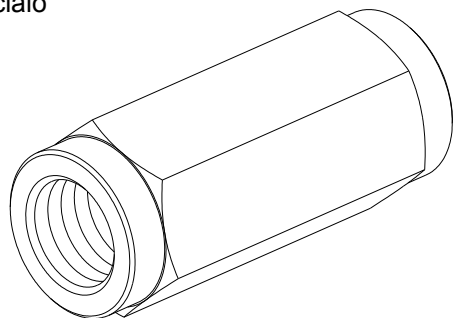
Modello  
Type

I dati non sono impegnativi, **CBF** si riserva di apportare modifiche senza preavviso.  
 The specifications are not binding, **CBF** reserves the right to introduce modifications without notice.

Valvola unidirezionale in linea a sfera e a spillo  
*In line check valve, ball and poppet type*

mod. **VU-SF** (sfera – ball) / **VU-SP** (spillo – poppet)

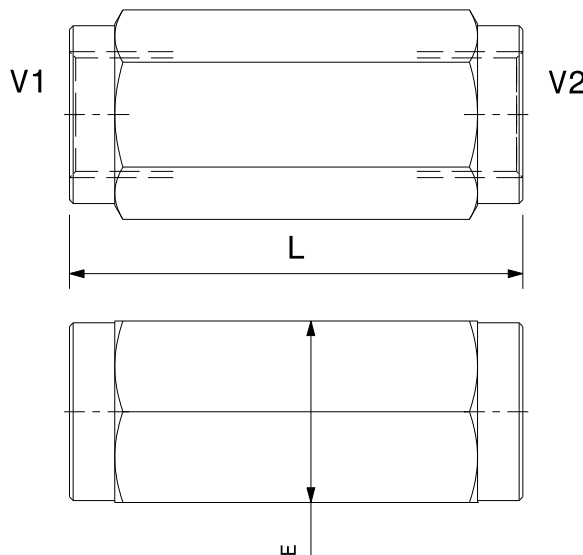
Corpo in acciaio  
*Steel body*



Modello Type	V1 V2	Portata massima Max flow l/min	Pressione massima Max pressure bar
<b>VU14-SF</b>	1/4" GAS	15	500
<b>VU38-SF</b>	3/8" GAS	30	500
<b>VU12-SF</b>	1/2" GAS	50	500
<b>VU34-SF</b>	3/4" GAS	90	350
<b>VU14-SP</b>	1/4" GAS	15	500
<b>VU38-SP</b>	3/8" GAS	30	500
<b>VU12-SP</b>	1/2" GAS	50	500
<b>VU34-SP</b>	3/4" GAS	90	350
<b>VU10-SP</b>	1" GAS	150	350

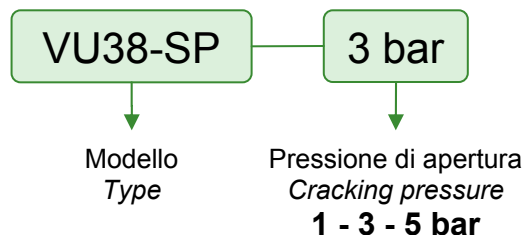
Pressione di apertura <i>Cracking pressure</i>	<b>1 bar</b> <b>3 bar</b> <b>5 bar</b>
---	--

Dati e tarature ottenuti usando olio con viscosità 30 cSt a 50°C <i>Performaces and calibrations are carried out by using hydraulic oil with 30 cSt viscosity at 50°C</i>	
Viscosità consigliate <i>Recommended viscosity</i>	10 ÷ 420 cSt
Temperature di lavoro <i>Working temperature</i>	-20 ÷ +90 °C
Filtrazione assoluta <i>Absolute filtration</i>	25 µ



Dimensioni <i>Dimensions</i>	L	E
VU14-SF	55	ES. 19
VU14-SP	55	ES. 19
VU38-SF	60	ES. 24
VU38-SP	60	ES. 24
VU12-SF	70	ES. 27
VU12-SP	70	ES. 27
VU34-SF	85	ES. 36
VU34-SP	85	ES. 36
VU10-SP	100	ES. 41

Sigla di ordinazione / Ordering code

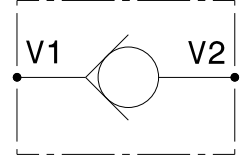
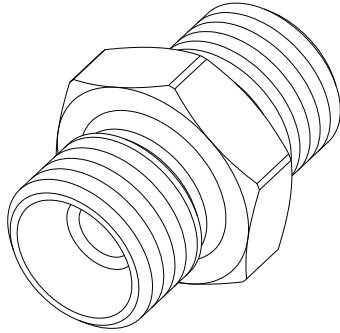


I dati non sono impegnativi, **CBF** si riserva di apportare modifiche senza preavviso.  
*The specifications are not binding, CBF reserves the right to introduce modifications without notice.*



Valvola unidirezionale in linea  
*In line check valve*  
 mod. **VU-MM**

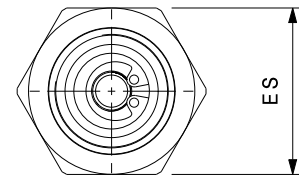
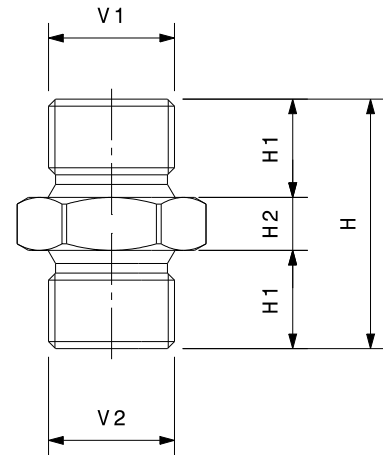
Corpo in acciaio  
*Steel body*



Modello Type	V1 V2	Portata massima Max flow l/min	Pressione massima Max pressure bar
<b>VU38-MM</b>	3/8" GAS	25	350
<b>VU12-MM</b>	1/2" GAS	40	350

Pressione di apertura <i>Cracking pressure</i>	<b>2bar</b>
---	-------------

Dati e tarature ottenuti usando olio con viscosità 30 cSt a 50°C <i>Performances and calibrations are carried out by using hydraulic oil with 30 cSt viscosity at 50°C</i>	
Viscosità consigliate <i>Recommended viscosity</i>	10 ÷ 420 cSt
Temperature di lavoro <i>Working temperature</i>	-20 ÷ +90 °C
Filtrazione assoluta <i>Absolute filtration</i>	25 µ



Dimensioni <i>Dimensions</i>	H	H1	H2	ES
VU38-MM	33	13	7	22
VU12-MM	37	14	9	27

Sigla di ordinazione / Ordering code

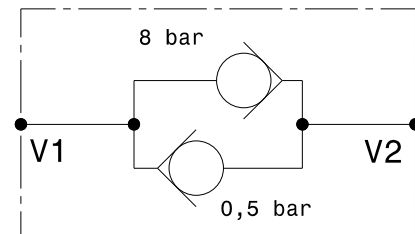
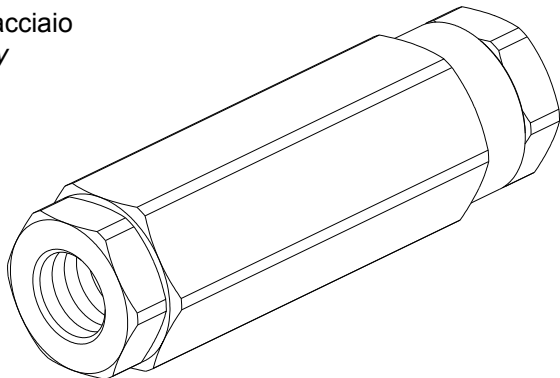
**VU38-MM**

Modello  
Type

I dati non sono impegnativi, **CBF** si riserva di apportare modifiche senza preavviso.  
*The specifications are not binding, CBF reserves the right to introduce modifications without notice.*

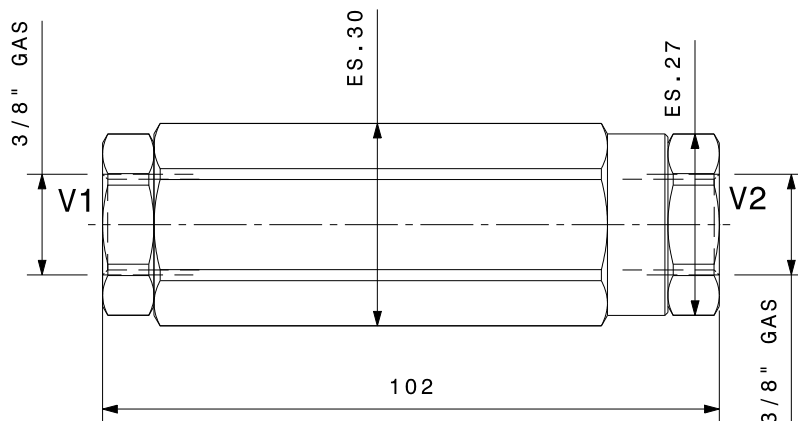
Valvola bidirezionale  
*Bidirectional check valve*  
 mod. **VBD-E**

Corpo in acciaio  
*Steel body*



Portata massima <i>Max flow</i>	30 l/min
Pressione massima <i>Max pressure</i>	350 bar
Pressione di apertura V1 → V2 <i>Cracking pressure V1 → V2</i>	<b>0,5 bar</b>
Pressione di apertura V2 → V1 <i>Cracking pressure V2 → V1</i>	<b>8 bar</b>

Dati e tarature ottenuti usando olio con viscosità 30 cSt a 50°C <i>Performaces and calibrations are carried out by using hydraulic oil with 30 cSt viscosity at 50°C</i>	
Viscosità consigliate <i>Recommended viscosity</i>	10 ÷ 420 cSt
Temperatura di lavoro <i>Working temperature</i>	-20 ÷ +90 °C
Filtrazione assoluta <i>Absolute filtration</i>	25 µ



Sigla di ordinazione / Ordering code

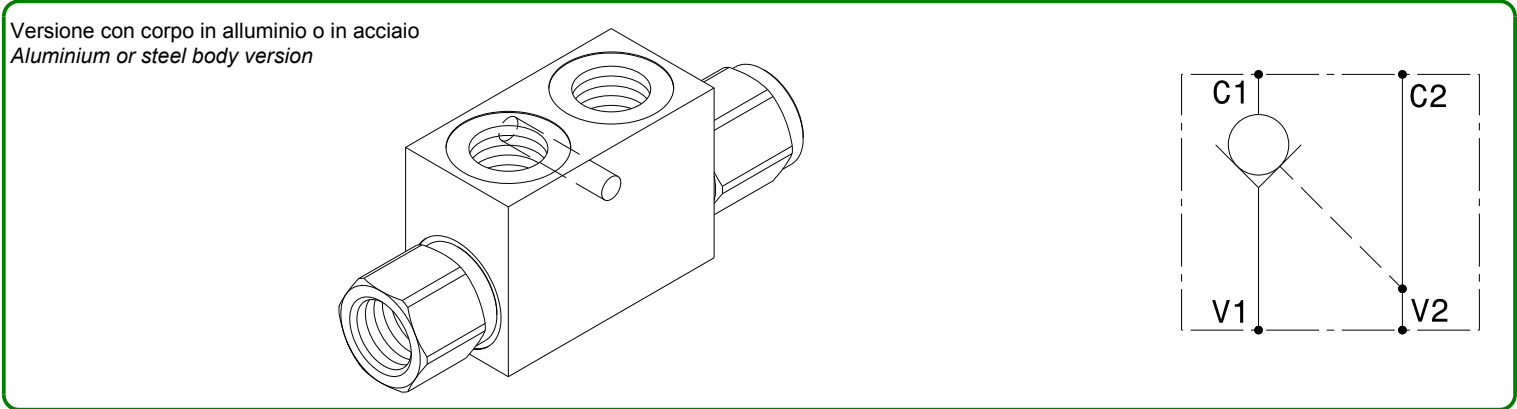
**VBD-E-38**

Modello  
*Type*

I dati non sono impegnativi, **CBF** si riserva di apportare modifiche senza preavviso.  
*The specifications are not binding, CBF reserves the right to introduce modifications without notice.*

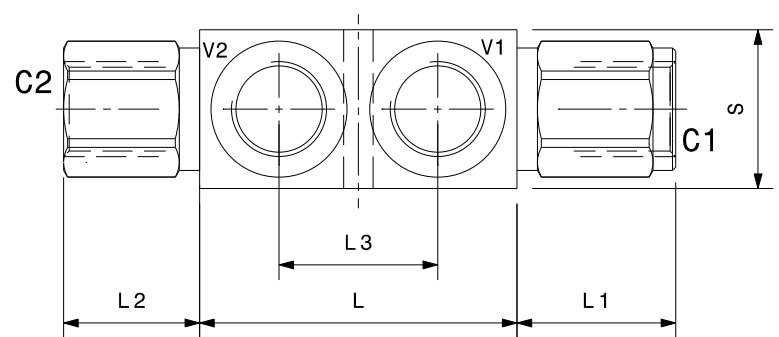
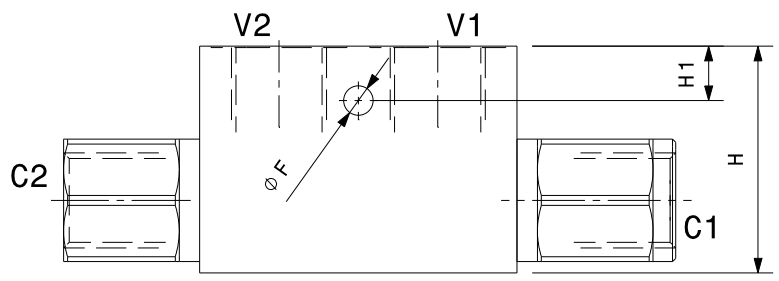
Valvola di blocco pilotata a semplice effetto a sfera o a cono  
*Single effect, pilot operated check valve, ball or poppet type*

mod. **VBS-SF** (sfera – ball) / **VBS-SP** (cono – poppet)



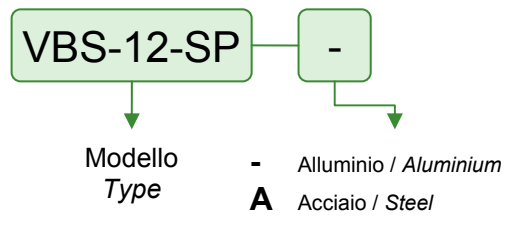
Modello Type	Rapporto di pilotaggio Pilot ratio	Portata massima Max flow l/min	Pressione massima Max pressure bar	Pressione di apertura Cracking pressure bar
<b>VBS-14-SF</b>	4:1	20	350	3
<b>VBS-38-SF</b>	4:1	35	350	3
<b>VBS-12-SF</b>	3:1	50	350	1
<b>VBS-14-SP</b>	4:1	20	350	3
<b>VBS-38-SP</b>	4:1	35	350	3
<b>VBS-12-SP</b>	3:1	50	350	1
<b>VBS-34-SP</b>	4:1	80	250	0.5

Dati e tarature ottenuti usando olio con viscosità 30 cSt a 50°C <i>Performances and calibrations are carried out by using hydraulic oil with 30 cSt viscosity at 50°C</i>	
Viscosità consigliate <i>Recommended viscosity</i>	10 ÷ 420 cSt
Temperature di lavoro <i>Working temperature</i>	-20 ÷ +90 °C
Filtrazione assoluta <i>Absolute filtration</i>	25 µ



Dimensioni Dimensions	C V	L	L1	L2	L3	H	H1	S	F
VBS-14-SF	1/4" GAS	58	27	22	35	40	12	25	6.5
VBS-38-SF	3/8" GAS	58	29	22	30	50	12	30	6.5
VBS-12-SF	1/2" GAS	70	35	26	35	50	12	35	6.5
VBS-14-SP	1/4" GAS	58	27	22	35	40	12	25	6.5
VBS-38-SP	3/8" GAS	58	29	22	30	50	12	30	6.5
VBS-12-SP	1/2" GAS	70	35	26	35	50	12	35	6.5
VBS-34-SP	3/4" GAS	100	40	40	50	60	15	40	8.5

**Sigla di ordinazione / Ordering code**

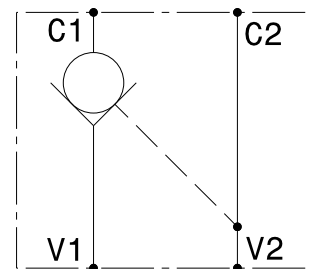
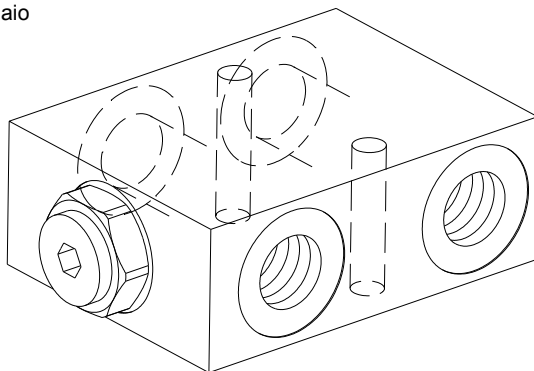


I dati non sono impegnativi, **CBF** si riserva di apportare modifiche senza preavviso.  
*The specifications are not binding, CBF reserves the right to introduce modifications without notice.*

Valvola di blocco pilotata a semplice effetto in linea  
*In line, single effect, pilot operated check valve*

mod. **VBS-L**

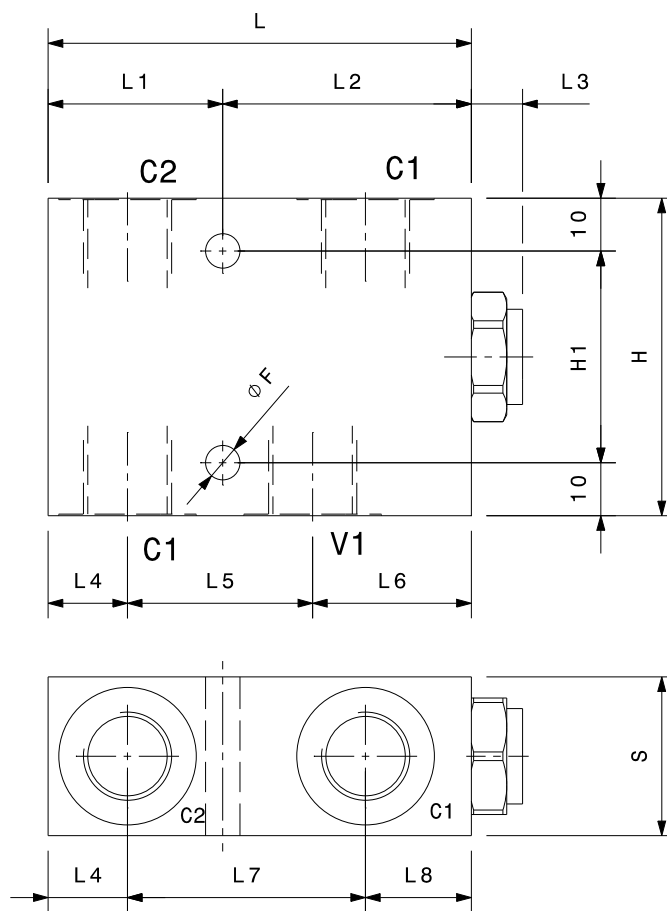
Versione con corpo in alluminio o in acciaio  
*Aluminium or steel body version*



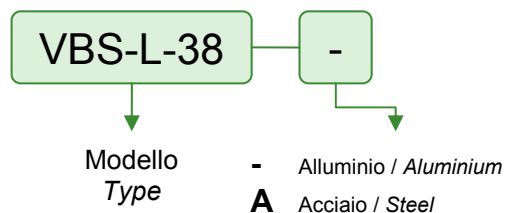
Modello Type	V C	Portata massima Max flow l/min	Pressione massima Max pressure bar	Pressione di apertura Cracking pressure bar
<b>VBS-L-14</b>	1/4" GAS	20	350	3
<b>VBS-L-38</b>	3/8" GAS	35	350	3
<b>VBS-L-12</b>	1/2" GAS	50	350	2
<b>VBS-L-34</b>	3/4" GAS	80	250	2

Rapporto di pilotaggio <i>Pilot ratio</i>	<b>4:1</b>
--	------------

Dati e tarature ottenuti usando olio con viscosità 30 cSt a 50°C <i>Performances and calibrations are carried out by using hydraulic oil with 30 cSt viscosity at 50°C</i>	
Viscosità consigliate <i>Recommended viscosity</i>	10 ÷ 420 cSt
Temperatura di lavoro <i>Working temperature</i>	-20 ÷ +90 °C
Filtrazione assoluta <i>Absolute filtration</i>	25 µ



Sigla di ordinazione / Ordering code



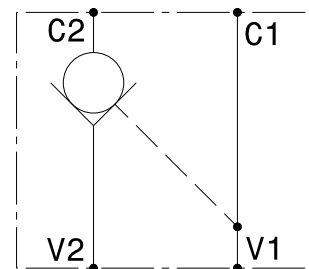
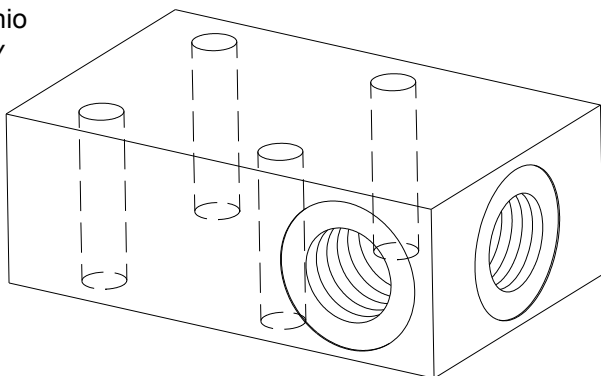
Dimensioni Dimensions	L	L1	L2	L3	L4	L5	L6	L7	L8	H	H1	S	F
VBS-L-14	80	33	47	10	15	31	34	45	20	60	40	30	6.5
VBS-L-38	80	33	47	10	15	35	30	45	20	60	40	30	6.5
VBS-L-12	80	33	47	10	16	35	29	45	18	60	40	35	8.5
VBS-L-34	90	45	55	20	22.5	45.5	32	55	22.5	70	50	40	8.5

I dati non sono impegnativi, **CBF** si riserva di apportare modifiche senza preavviso.  
*The specifications are not binding, CBF reserves the right to introduce modifications without notice.*

Valvola di blocco pilotata a semplice effetto flangiabile  
*Flangeable, single effect, pilot operated check valve*

mod. **VBS-L-F**

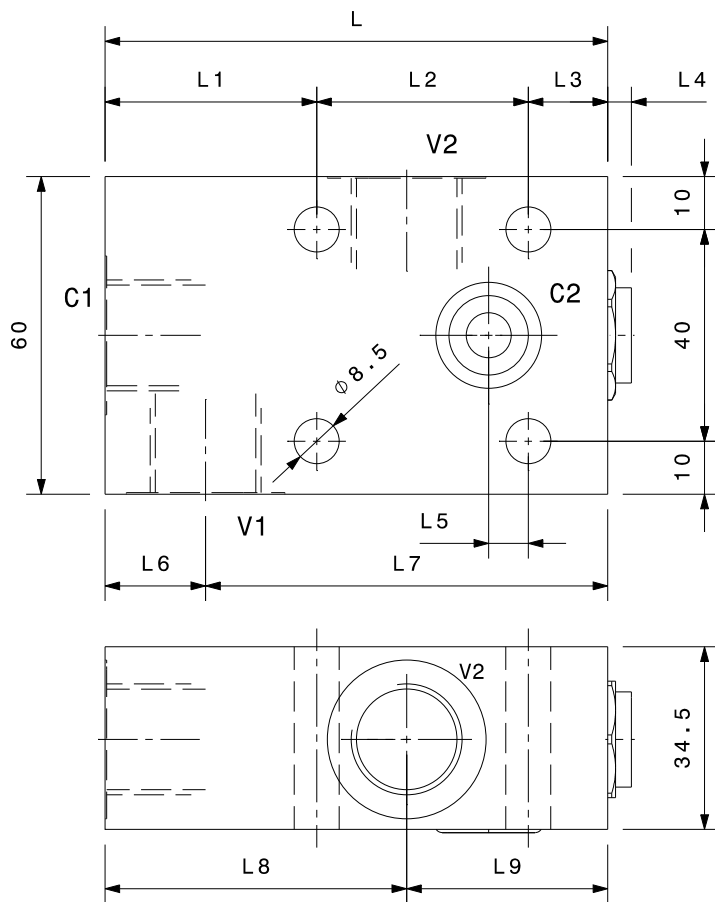
Corpo in alluminio  
 Aluminium body



Modello Type	V	Portata massima Max flow l/min	Pressione massima Max pressure bar	Pressione di apertura Cracking pressure bar
<b>VBS-L-F-38</b>	3/8" GAS	35	350	3
<b>VBS-L-F-12</b>	1/2" GAS	50	350	2

Rapporto di pilotaggio Pilot ratio	<b>4:1</b>
---------------------------------------	------------

Dati e tarature ottenuti usando olio con viscosità 30 cSt a 50°C Performances and calibrations are carried out by using hydraulic oil with 30 cSt viscosity at 50°C	
Viscosità consigliate Recommended viscosity	10 ÷ 420 cSt
Temperature di lavoro Working temperature	-20 ÷ +90 °C
Filtrazione assoluta Absolute filtration	25 µ



Dimensioni Dimensions	L	L1	L2	L3	L4	L5	L6	L7	L8	L9	S	F
VBS-L-F-38	80	32	35	13	5	4	16	64	48	32	30	6.5
VBS-L-F-12	95	40	40	15	10	7.5	19	76	57	38	35	8.5

Sigla di ordinazione / Ordering code

**VBS-L-F-38**

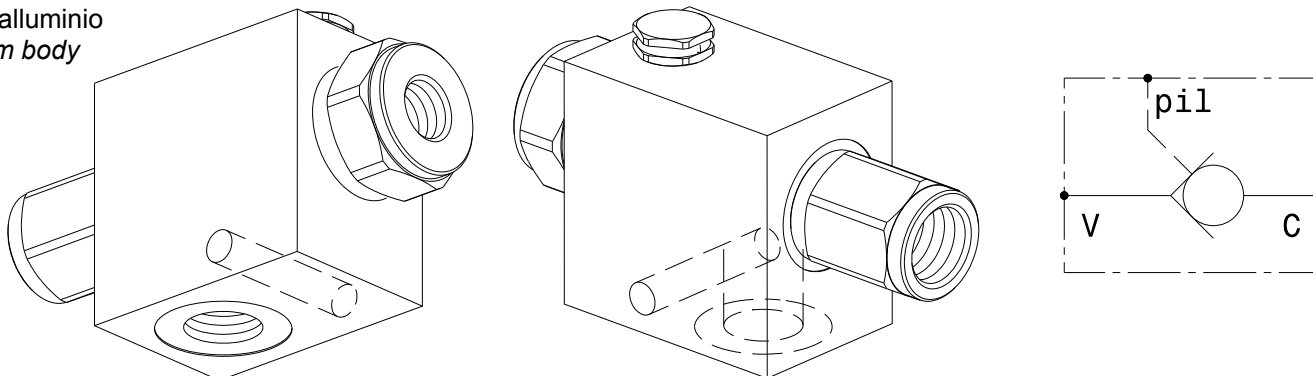
Modello  
Type

I dati non sono impegnativi, **CBF** si riserva di apportare modifiche senza preavviso.  
 The specifications are not binding, **CBF** reserves the right to introduce modifications without notice.

Valvola di blocco semplice effetto con pilotaggio separato  
*Pilot operated check valve with vented pilot*

mod. **VBS-L-PS**

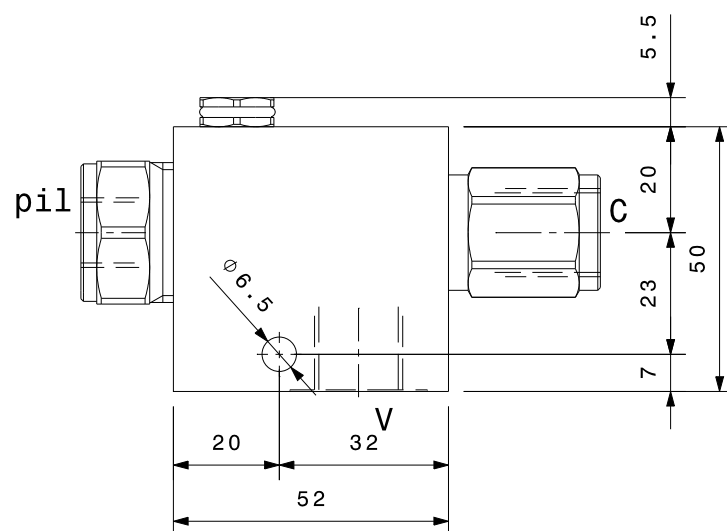
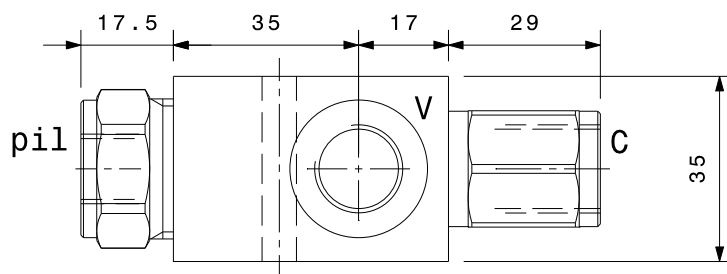
Corpo in alluminio  
 Aluminium body



Modello Type	V C	Pil	Portata massima Max flow l/min	Pressione di apertura Cracking pressure bar
<b>VBS-L-PS-14</b>	1/4" GAS	1/4" GAS	20	3
<b>VBS-L-PS-38</b>	3/8" GAS	1/4" GAS	35	6
<b>VBS-L-PS-12</b>	1/2" GAS	1/4" GAS	50	6

Pressione massima Max pressure	350 bar
Rapporto di pilotaggio Pilot ratio	11:1

Dati e tarature ottenuti usando olio con viscosità 30 cSt a 50°C Performaces and calibrations are carried out by using hydraulic oil with 30 cSt viscosity at 50°C	
Viscosità consigliate Recommended viscosity	10 ÷ 420 cSt
Temperatura di lavoro Working temperature	-20 ÷ +90 °C
Filtrazione assoluta Absolute filtration	25 µ



Sigla di ordinazione / Ordering code

**VBS-L-PS-38**

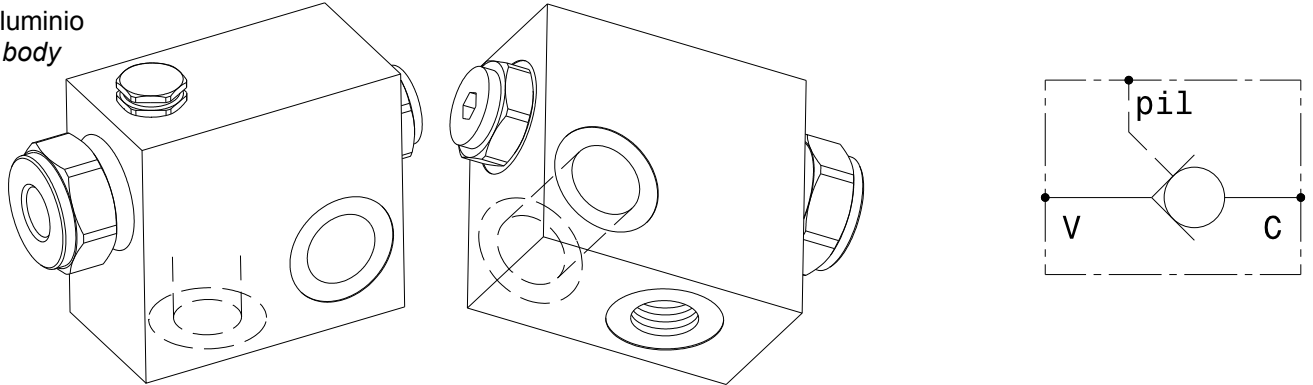
Modello  
Type

I dati non sono impegnativi, **CBF** si riserva di apportare modifiche senza preavviso.  
 The specifications are not binding, **CBF** reserves the right to introduce modifications without notice.

Valvola di blocco semplice effetto flangiabile con pilotaggio separato  
*Flangeable pilot operated check valve with vented pilot*

mod. **VBS-F-PS**

Corpo in alluminio  
 Aluminium body

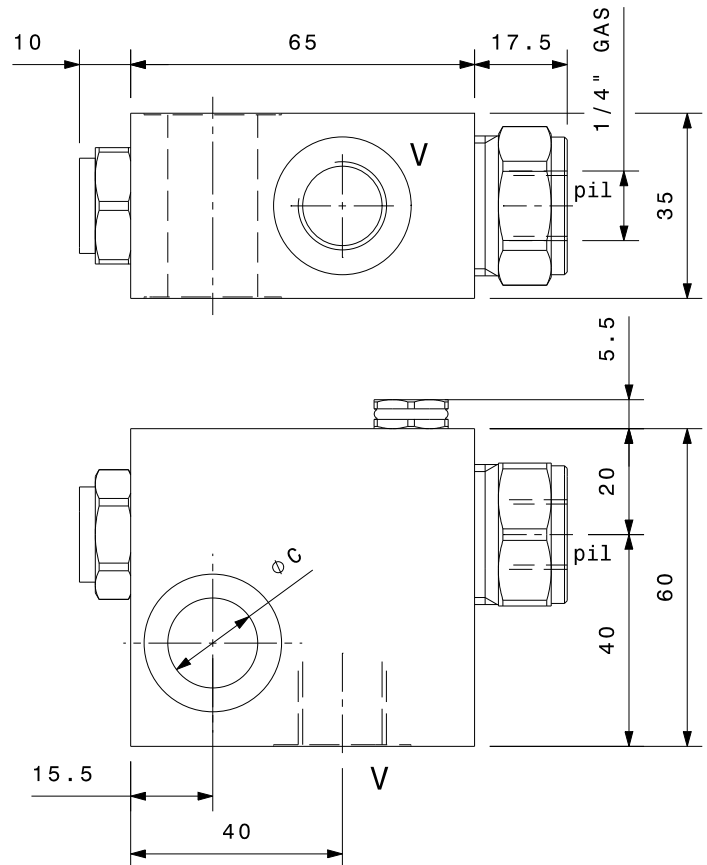


Modello Type	V	C	Portata massima Max flow l/min
<b>VBS-F-PS-38</b>	3/8" GAS	17	35
<b>VBS-F-PS-12</b>	1/2" GAS	21	50

Pressione massima Max pressure	350 bar
Rapporto di pilotaggio Pilot ratio	<b>11:1</b>
Pressione di apertura Cracking pressure	<b>8 bar</b>

Dati e tarature ottenuti usando olio con viscosità 30 cSt a 50°C Performances and calibrations are carried out by using hydraulic oil with 30 cSt viscosity at 50°C	
Viscosità consigliate Recommended viscosity	10 ÷ 420 cSt
Temperature di lavoro Working temperature	-20 ÷ +90 °C
Filtrazione assoluta Absolute filtration	25 µ

Vite cava disponibile a richiesta Nipple screw available upon request	Modello Type	Codice di ordinazione Ordering code
	<b>VBS-F-PS-38</b>	<b>KITV0001</b>
	<b>VBS-F-PS-12</b>	<b>KITV0003</b>



Sigla di ordinazione / Ordering code

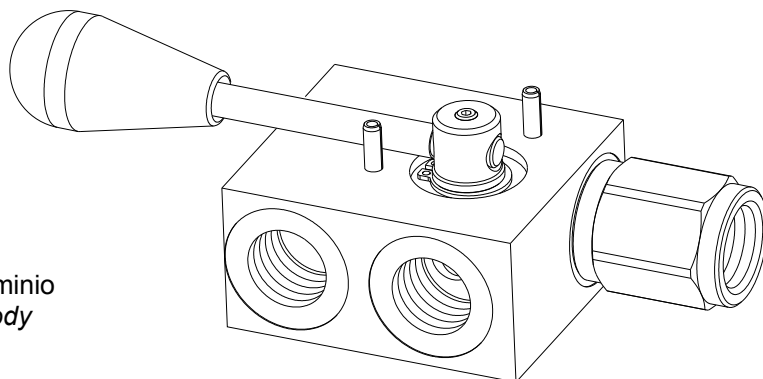
**VBS-F-PS-38**

Modello  
Type

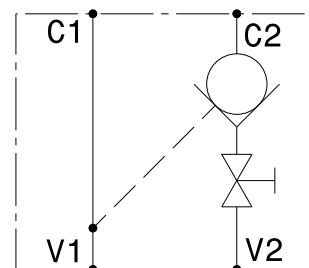
I dati non sono impegnativi, **CBF** si riserva di apportare modifiche senza preavviso.  
 The specifications are not binding, **CBF** reserves the right to introduce modifications without notice.

Valvola di blocco pilotata a semplice effetto con rubinetto manuale, tenuta a sfera o a cono - destro  
*Single effect, pilot operated check valve with manual lever, ball and poppet type - RH*

mod. **VBS-R-D**



Corpo in alluminio  
*Aluminium body*

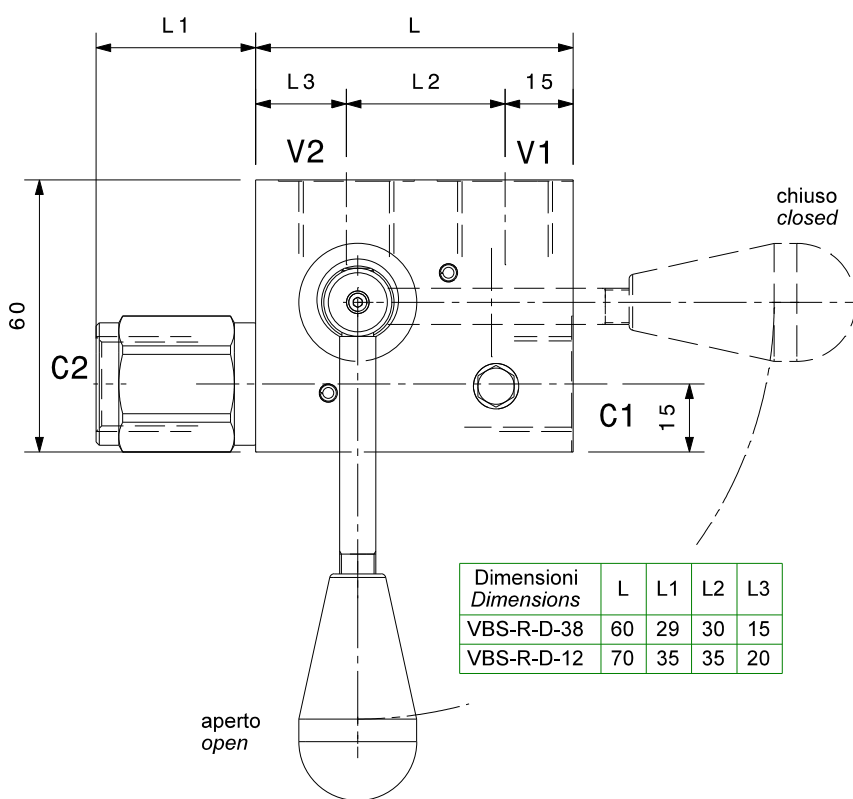


Modello Type	V	Portata massima Max flow l/min	Pressione massima Max pressure bar	Pressione di apertura Cracking pressure bar
VBS-R-D-38	3/8" GAS	35	300	3
VBS-R-D-12	1/2" GAS	50	300	1

Rapporto di pilotaggio <i>Pilot ratio</i>	<b>4:1</b>
--	------------

Dati e tarature ottenuti usando olio con viscosità 30 cSt a 50°C  
*Performaces and calibrations are carried out by using hydraulic oil with 30 cSt viscosity at 50°C*

Viscosità consigliate <i>Recommended viscosity</i>	10 ÷ 420 cSt
Temperature di lavoro <i>Working temperature</i>	-20 ÷ +90 °C
Filtrazione assoluta <i>Absolute filtration</i>	25 µ



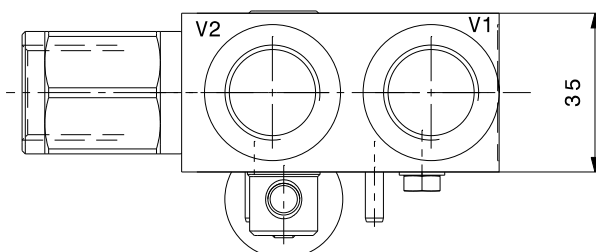
Dimensioni <i>Dimensions</i>	L	L1	L2	L3
VBS-R-D-38	60	29	30	15
VBS-R-D-12	70	35	35	20

Sigla di ordinazione / Ordering code

**VBS-R-D-38** — **SF**

Modello  
Type

**SF** Sfera / Ball  
**SP** Cono / Poppet

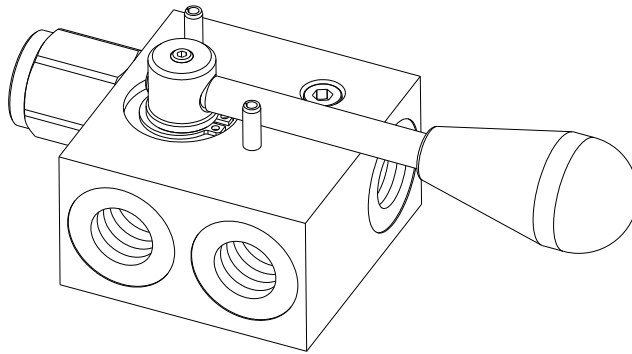


I dati non sono impegnativi, **CBF** si riserva di apportare modifiche senza preavviso.  
*The specifications are not binding, CBF reserves the right to introduce modifications without notice.*

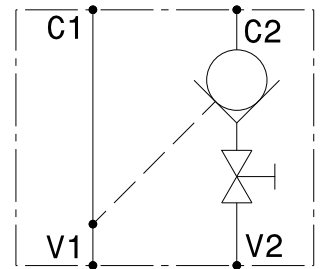


Valvola di blocco pilotata a semplice effetto con rubinetto manuale, tenuta a sfera o a cono - sinistro  
*Single effect, pilot operated check valve with manual lever, ball and poppet type - LH*

mod. **VBS-R-S**



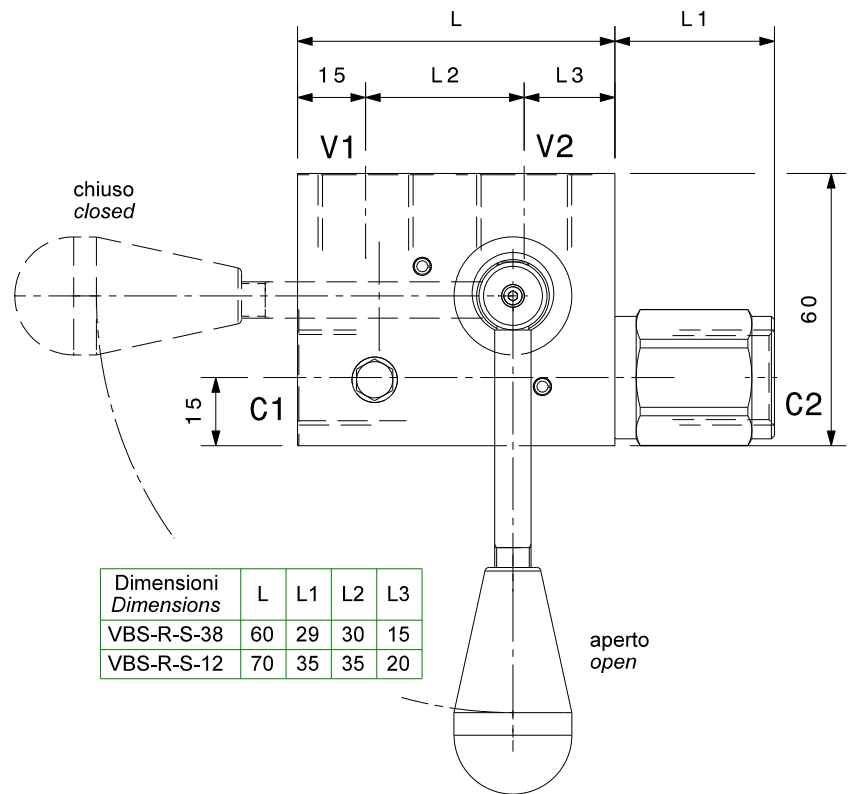
Corpo in alluminio  
*Aluminium body*



Modello Type	V	Portata massima Max flow l/min	Pressione massima Max pressure bar	Pressione di apertura Cracking pressure bar
VBS-R-S-38	3/8" GAS	35	300	3
VBS-R-S-12	1/2" GAS	50	300	1

Rapporto di pilotaggio <i>Pilot ratio</i>	<b>4:1</b>
--	------------

Dati e tarature ottenuti usando olio con viscosità 30 cSt a 50°C <i>Performaces and calibrations are carried out by using hydraulic oil with 30 cSt viscosity at 50°C</i>	
Viscosità consigliate <i>Recommended viscosity</i>	10 ÷ 420 cSt
Temperature di lavoro <i>Working temperature</i>	-20 ÷ +90 °C
Filtrazione assoluta <i>Absolute filtration</i>	25 µ

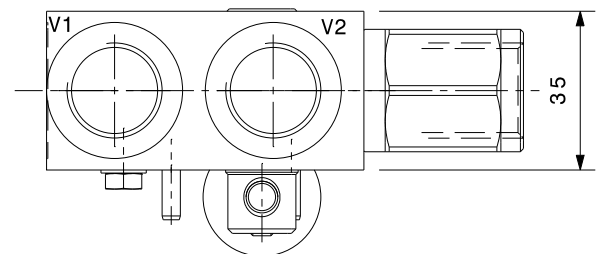


Sigla di ordinazione / Ordering code

**VBS-R-S-38** — **SF**

Modello  
*Type*

**SF** Sfera / Ball  
**SP** Cono / Poppet

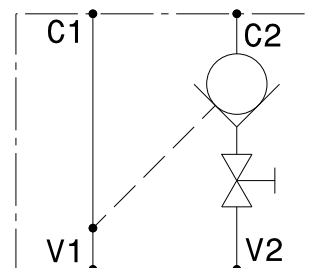
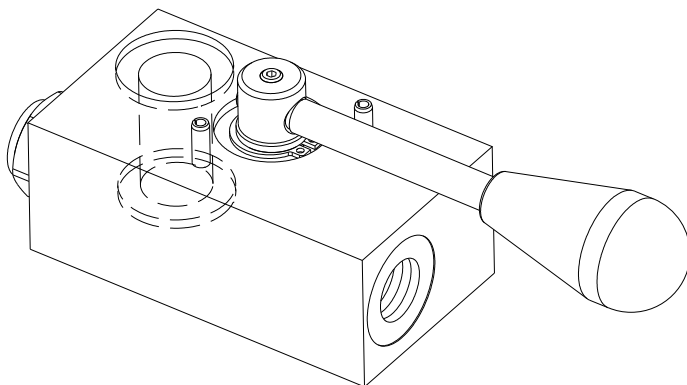


I dati non sono impegnativi, **CBF** si riserva di apportare modifiche senza preavviso.  
*The specifications are not binding, CBF reserves the right to introduce modifications without notice.*

Valvola di blocco pilotata a semplice effetto flangiabile con rubinetto manuale - destro  
*Flangeable, single effect, pilot operated check valve with manual lever - RH*

mod. **VBS-F-R-D-38**

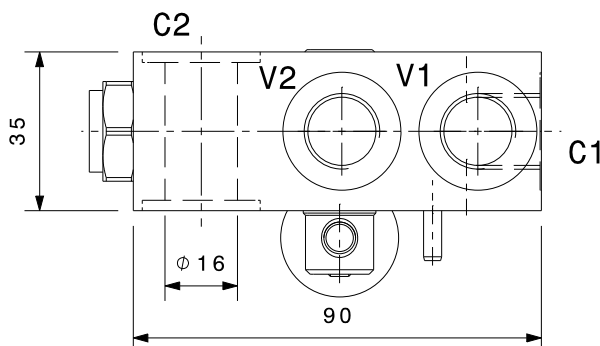
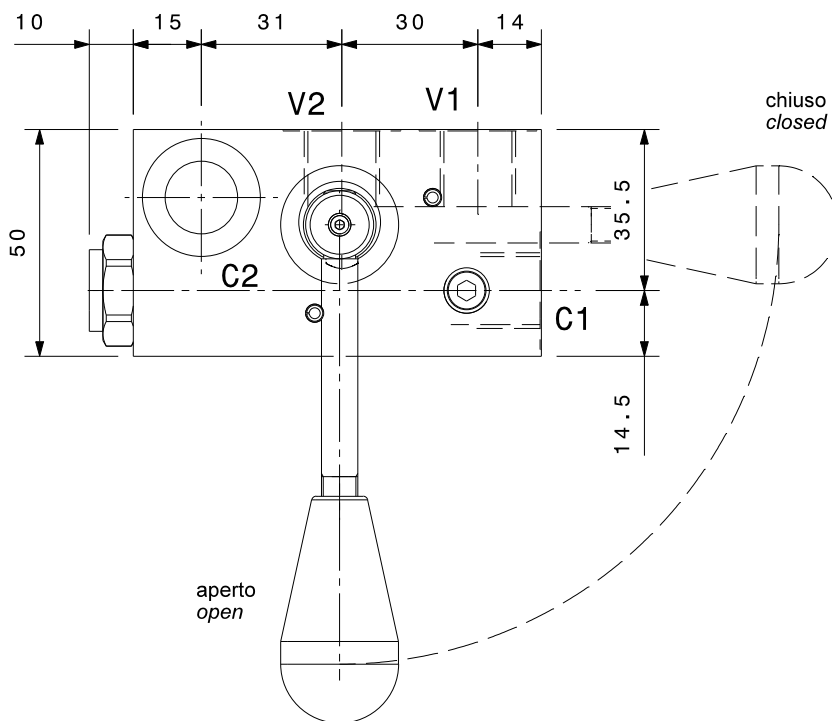
Corpo in alluminio  
*Aluminium body*



Portata massima <i>Max flow</i>	35 l/min
Pressione massima <i>Max pressure</i>	300 bar
Pressione di apertura <i>Cracking pressure</i>	<b>3 bar</b>
Rapporto di pilotaggio <i>Pilot ratio</i>	4:1

Dati e tarature ottenuti usando olio con viscosità 30 cSt a 50°C <i>Performaces and calibrations are carried out by using hydraulic oil with 30 cSt viscosity at 50°C</i>	
Viscosità consigliate <i>Recommended viscosity</i>	10 ÷ 420 cSt
Temperatura di lavoro <i>Working temperature</i>	-20 ÷ +90 °C
Filtrazione assoluta <i>Absolute filtration</i>	25 µ

Vite cava disponibile a richiesta <i>Nipple screw available upon request</i>	Codice di ordinazione <i>Ordering code</i>
	<b>KITV0001</b>



Sigla di ordinazione / Ordering code

**VBS-F-R-D-38**

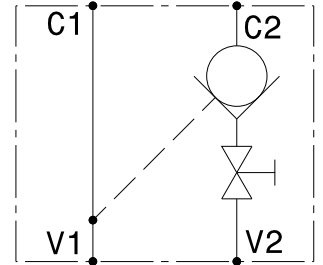
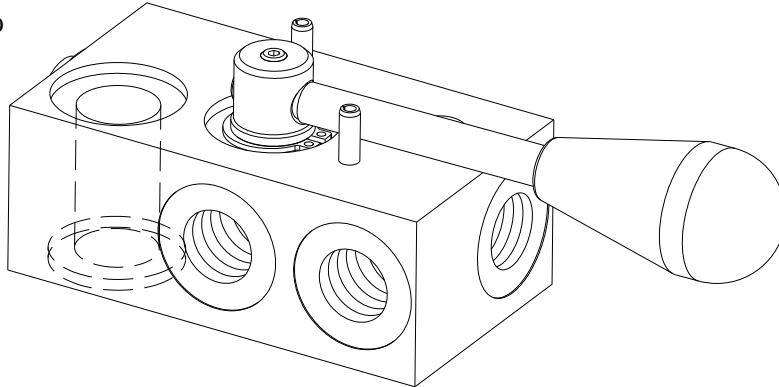
↓  
Modello  
Type

I dati non sono impegnativi, **CBF** si riserva di apportare modifiche senza preavviso.  
*The specifications are not binding, CBF reserves the right to introduce modifications without notice.*

Valvola di blocco pilotata a semplice effetto flangiabile con rubinetto manuale - sinistro  
*Flangeable, single effect, pilot operated check valve with manual lever - LH*

mod. **VBS-F-R-S-38**

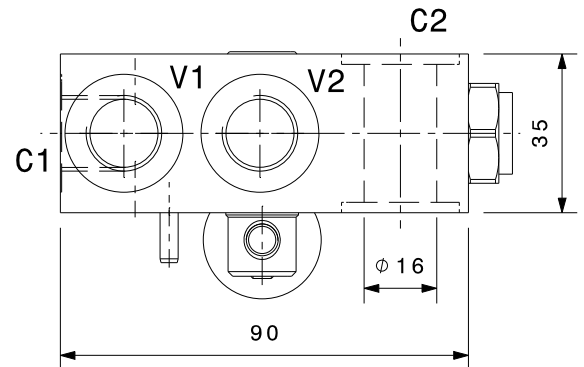
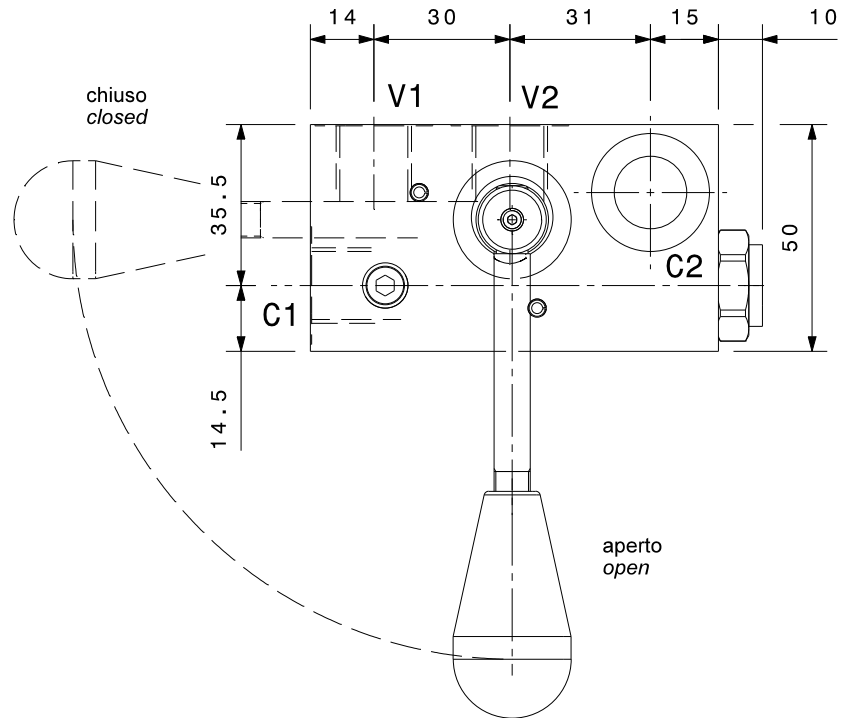
Corpo in alluminio  
 Aluminium body



Portata massima <i>Max flow</i>	35 l/min
Pressione massima <i>Max pressure</i>	300 bar
Pressione di apertura <i>Cracking pressure</i>	<b>3 bar</b>
Rapporto di pilotaggio <i>Pilot ratio</i>	4:1

Dati e tarature ottenuti usando olio con viscosità 30 cSt a 50°C <i>Performaces and calibrations are carried out by using hydraulic oil with 30 cSt viscosity at 50°C</i>	
Viscosità consigliate <i>Recommended viscosity</i>	10 ÷ 420 cSt
Temperatura di lavoro <i>Working temperature</i>	-20 ÷ +90 °C
Filtrazione assoluta <i>Absolute filtration</i>	25 µ

Vite cava disponibile a richiesta <i>Nipple screw available upon request</i>	Codice di ordinazione <i>Ordering code</i>
	<b>KITV0001</b>



Sigla di ordinazione / Ordering code

**VBS-F-R-S-38**

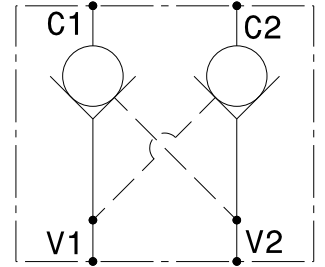
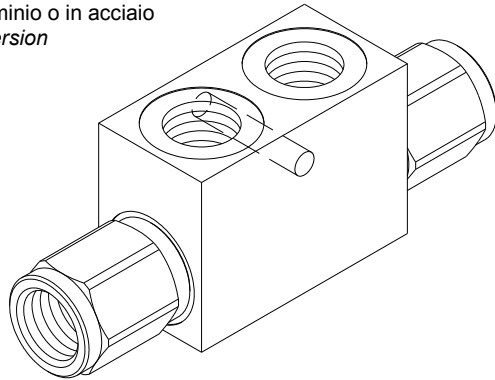
Modello  
 Type

I dati non sono impegnativi, **CBF** si riserva di apportare modifiche senza preavviso.  
 The specifications are not binding, **CBF** reserves the right to introduce modifications without notice.

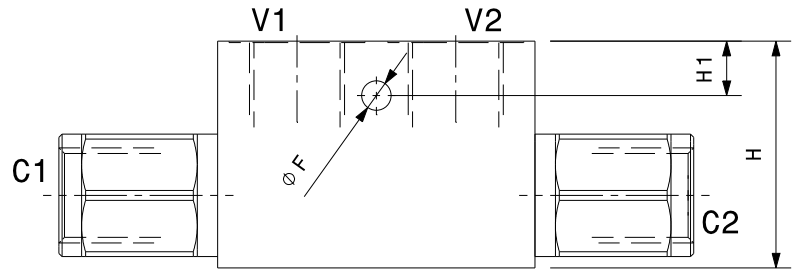
Valvola di blocco pilotata a doppio effetto a sfera o a cono  
*Double effect, pilot operated check valve, ball or poppet type*

mod. **VBD-SF** (sfera – ball) / **VBD-SP** (cono – poppet)

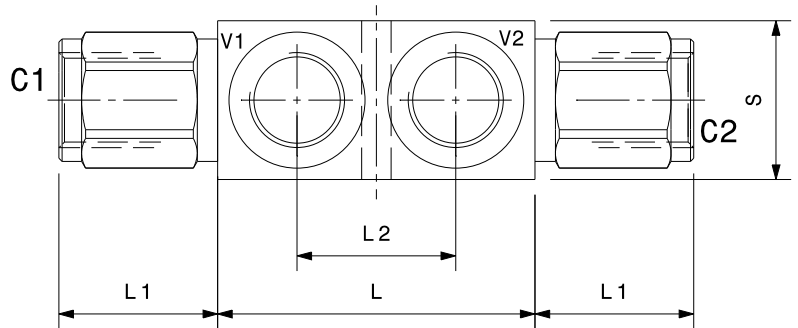
Versione con corpo in alluminio o in acciaio  
*Aluminium or steel body version*



Modello Type	Rapporto di pilotaggio Pilot ratio	Portata massima Max flow l/min	Pressione massima Max pressure bar	Pressione di apertura Cracking pressure bar
<b>VBD-14-SF</b>	4:1	20	350	3
<b>VBD-38-SF</b>	4:1	35	350	3
<b>VBD-12-SF</b>	3:1	50	350	1
<b>VBD-14-SP</b>	4:1	20	350	3
<b>VBD-38-SP</b>	4:1	35	350	3
<b>VBD-12-SP</b>	3:1	50	350	1
<b>VBD-34-SP</b>	4:1	80	250	0.5

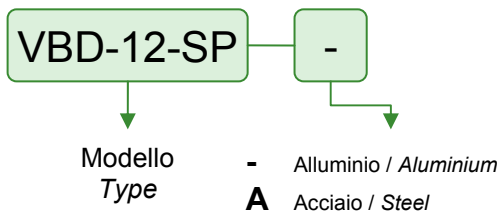


Dati e tarature ottenuti usando olio con viscosità 30 cSt a 50°C <i>Performances and calibrations are carried out by using hydraulic oil with 30 cSt viscosity at 50°C</i>	
Viscosità consigliate <i>Recommended viscosity</i>	10 ÷ 420 cSt
Temperature di lavoro <i>Working temperature</i>	-20 ÷ +90 °C
Filtrazione assoluta <i>Absolute filtration</i>	25 µ



Dimensioni Dimensions	C V	L	L1	L2	H	H1	S	F
VBD-14-SF	1/4" GAS	58	27	35	40	12	25	6.5
VBD-38-SF	3/8" GAS	58	29	30	50	12	30	6.5
VBD-12-SF	1/2" GAS	70	35	35	50	12	35	6.5
VBD-14-SP	1/4" GAS	58	27	35	40	12	25	6.5
VBD-38-SP	3/8" GAS	58	29	30	50	12	30	6.5
VBD-12-SP	1/2" GAS	70	35	35	50	12	35	6.5
VBD-34-SP	3/4" GAS	100	40	50	60	15	40	8.5

**Sigla di ordinazione / Ordering code**



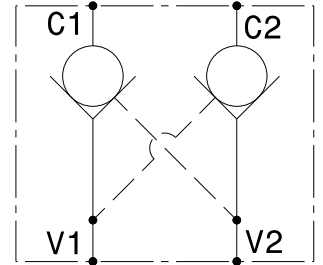
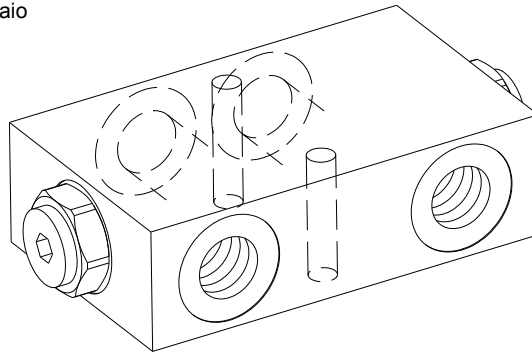
I dati non sono impegnativi, **CBF** si riserva di apportare modifiche senza preavviso.  
*The specifications are not binding, CBF reserves the right to introduce modifications without notice.*



Valvola di blocco pilotata a doppio effetto in linea  
*In line, double effect, pilot operated check valve*

mod. **VBD-L**

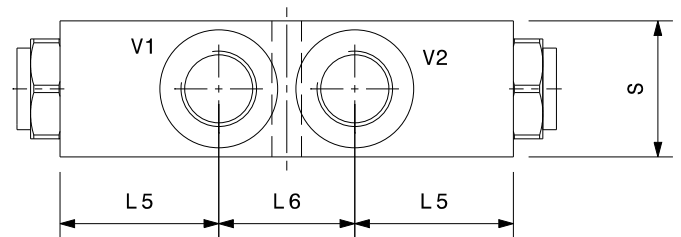
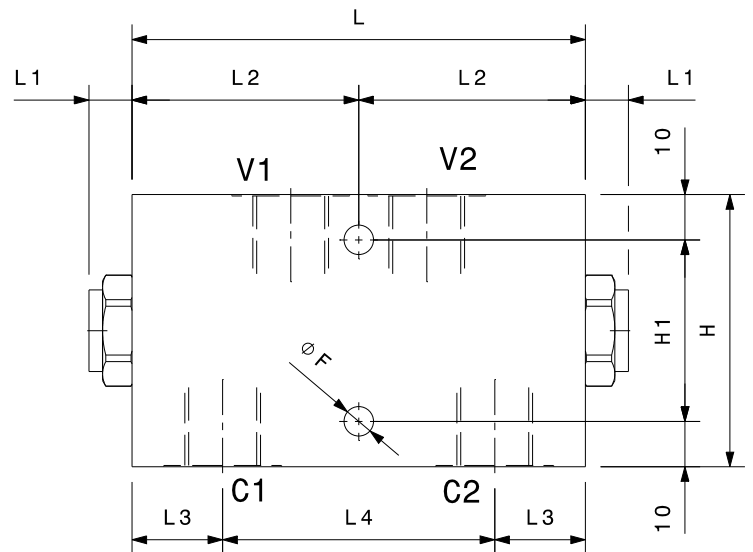
Versione con corpo in alluminio o in acciaio  
*Aluminium or steel body version*



Modello Type	V C	Portata massima Max flow l/min	Pressione massima Max pressure bar	Pressione di apertura Cracking pressure bar
VBD-L-14	1/4" GAS	20	350	3
VBD-L-38	3/8" GAS	35	350	3
VBD-L-12	1/2" GAS	50	350	2
VBD-L-34	3/4" GAS	80	250	2

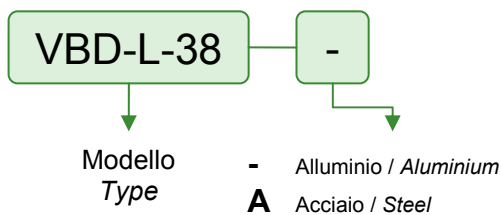
Rapporto di pilotaggio <i>Pilot ratio</i>	<b>4:1</b>
--	------------

Dati e tarature ottenuti usando olio con viscosità 30 cSt a 50°C <i>Performaces and calibrations are carried out by using hydraulic oil with 30 cSt viscosity at 50°C</i>	
Viscosità consigliate <i>Recommended viscosity</i>	10 ÷ 420 cSt
Temperatura di lavoro <i>Working temperature</i>	-20 ÷ +90 °C
Filtrazione assoluta <i>Absolute filtration</i>	25 µ



Dimensioni	L	L1	L2	L3	L4	L5	L6	H	H1	S	F
VBD-L-14	100	10	50	20	60	35	30	60	40	30	6.5
VBD-L-38	100	10	50	20	60	35	30	60	40	30	6.5
VBD-L-12	100	10	50	20	60	30	40	60	40	35	8.5
VBD-L-34	110	20	55	23	64	32.5	45	70	50	40	8.5

Sigla di ordinazione / Ordering code

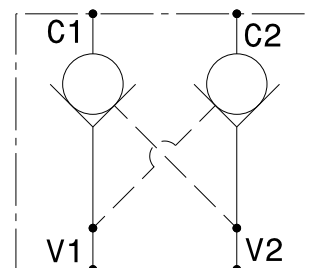
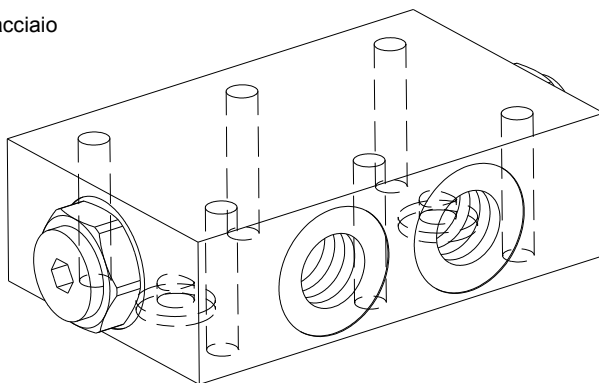


I dati non sono impegnativi, **CBF** si riserva di apportare modifiche senza preavviso.  
*The specifications are not binding, CBF reserves the right to introduce modifications without notice.*

Valvola di blocco pilotata a doppio effetto flangiabile  
*Flangeable, double effect, pilot operated check valve*

mod. **VBD-L-F**

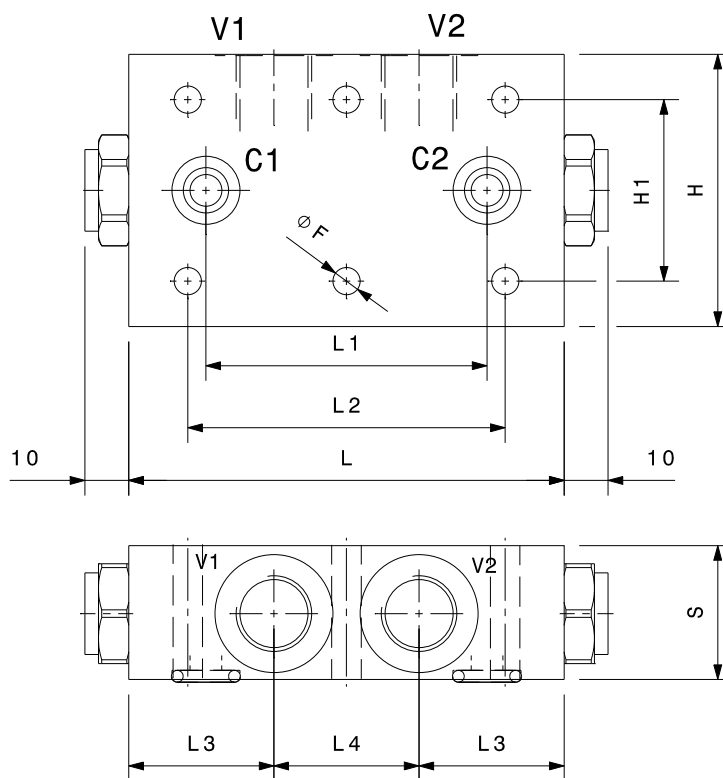
Versione con corpo in alluminio o in acciaio  
*Aluminium or steel body version*



Modello Type	V	Portata massima Max flow l/min	Pressione massima Max pressure bar	Pressione di apertura Cracking pressure bar
VBD-L-F-38	3/8" GAS	35	350	3
VBD-L-F-12	1/2" GAS	50	350	2
VBD-L-F-34	3/4" GAS	80	250	2

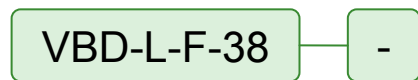
Rapporto di pilotaggio Pilot ratio	<b>4:1</b>
---------------------------------------	------------

Dati e tarature ottenuti usando olio con viscosità 30 cSt a 50°C Performaces and calibrations are carried out by using hydraulic oil with 30 cSt viscosity at 50°C	
Viscosità consigliate Recommended viscosity	10 ÷ 420 cSt
Temperature di lavoro Working temperature	-20 ÷ +90 °C
Filtrazione assoluta Absolute filtration	25 µ



Dimensioni Dimensions	L	L1	L2	L3	L4	H	H1	S	F
VBD-L-F-38	96	62	70	32	32	60	40	30	6.5
VBD-L-F-12	100	65	80	33	34	60	40	35	8.5
VBD-L-F-34	155	105	135	46	63	80	50	50	10.5

Sigla di ordinazione / Ordering code

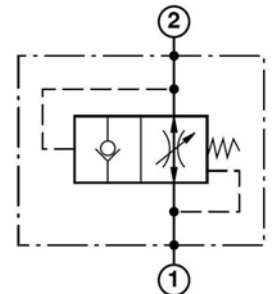
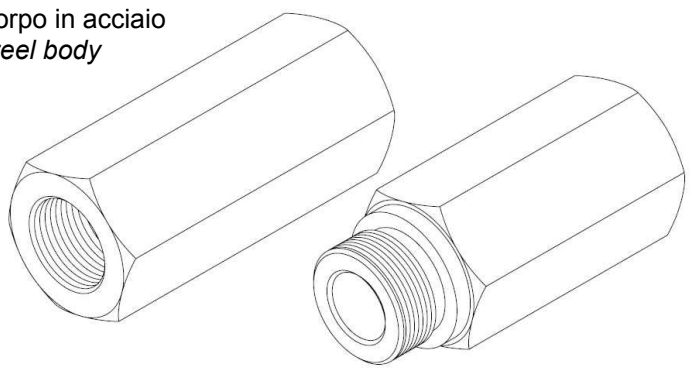


Modello Type  
 - Alluminio / Aluminium  
**A** Acciaio / Steel

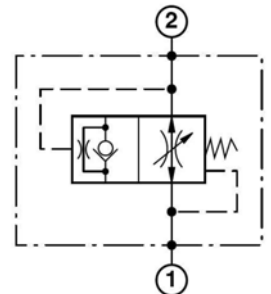
I dati non sono impegnativi, **CBF** si riserva di apportare modifiche senza preavviso.  
 The specifications are not binding, **CBF** reserves the right to introduce modifications without notice.

Valvola paracadute - colonnetta  
 Hose burst valve  
 mod. VPN-MF / FF

Corpo in acciaio  
 Steel body



Valvola di blocco completo del carico  
 Load full lock valve



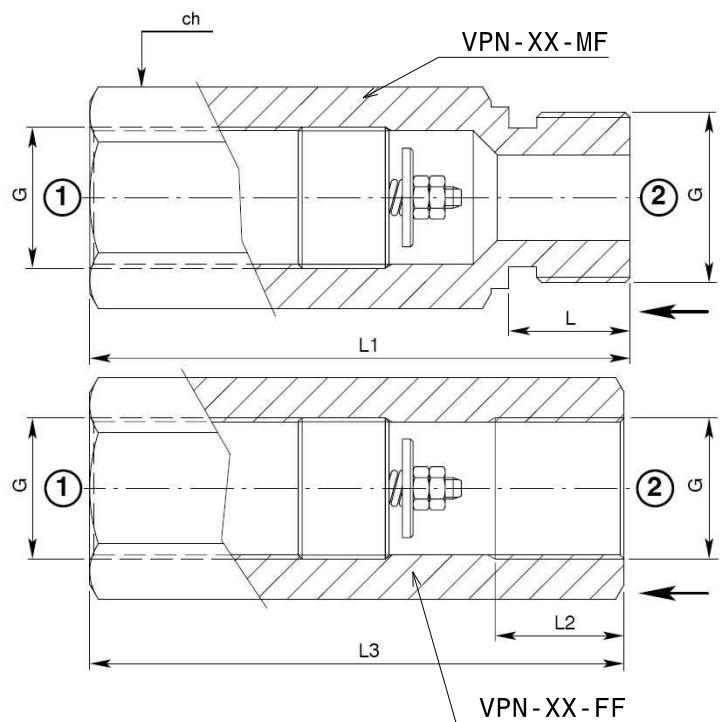
Valvola di abbassamento lento del carico  
 Load slow motion valve

Dopo il nostro montaggio le valvole risultano regolate rispettivamente a circa 0.5mm (per G=1/4" gas e G=3/8" gas) e 0.7mm (per G=1/2" gas e G=3/4" gas).

After our assembly procedure the valves are respectively set at about 0.5mm (for G=1/4" gas and G=3/8" gas) and 0.7mm (for G=1/2" gas and G=3/4" gas).

Dati e tarature ottenuti usando olio con viscosità 30 cSt a 50°C  
 Performaces and calibrations are carried out by using hydraulic oil with 30 cSt viscosity at 50°C

Viscosità consigliate Recommended viscosity	10 ÷ 420 cSt
Temperature di lavoro Working temperature	-20 ÷ +90 °C
Filtrazione assoluta Absolute filtration	25 µ

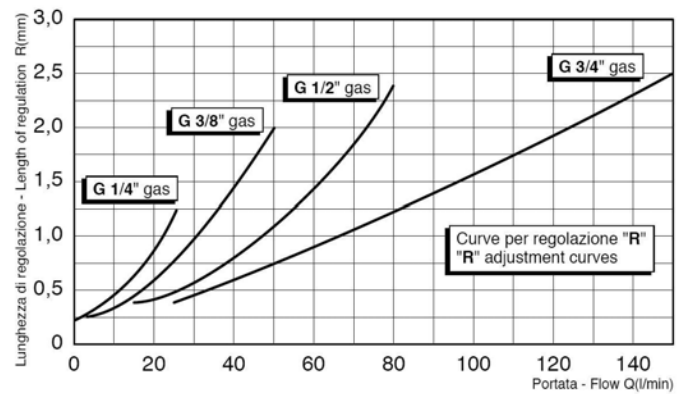


Modello Type	G	L	L1	L2	L3	Ch	Portata max Max flow l/min	Pressione massima Max pressure bar
VPN-14-MF / VPN-14-FF	1/4"GAS	10	50	13	48	19	25	350
VPN-38-MF / VPN-38-FF	3/8"GAS	12	55	13	52	22	50	350
VPN-12-MF / VPN-12-FF	1/2"GAS	14	70	14	60	27	80	350
VPN-34-MF / VPN-34-FF	3/4"GAS	16	75	17	72	32	150	350

Sigla di ordinazione / Ordering code

VPN-14-FF

Modello  
 Type



I dati non sono impegnativi, **CBF** si riserva di apportare modifiche senza preavviso.  
 The specifications are not binding, **CBF** reserves the right to introduce modifications without notice.